

# THE Electrical Connection

September 2010

Carrollton • Cartersville  
Covington • Norcross

**McNAUGHTON-McKAY**  
ELECTRIC COMPANY

Serving The Georgia Electrical Community...  
Celebrating 100 Years of Customer Service!

## Come Join Us for Our 100th Anniversary Open House Celebrations

Carrollton - September 23rd

Covington - September 30th

Cartersville - October 7th



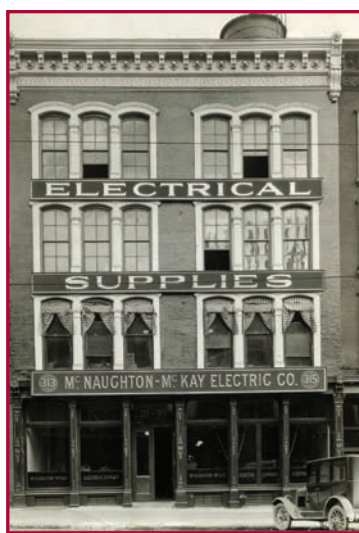
**11:00 a.m. - 2:00 p.m.**

McNaughton-McKay Electric Company of Georgia invites you to join us at our 2010 Customer Appreciation Open Houses as we celebrate 100 years of customer service in the electrical industry. This event will include a showcase of new products and solutions from our manufacturing partners.

- Looking for ideas to reduce downtime and improve uptime?
- Looking for ideas to drive reliability?
- Looking for ideas to reduce energy or the amount of force required to perform a task?

Then mark your calendar for these dates and we look forward to seeing you there!

**Pre-Register today using the link below!**



## Upcoming Training

September 23 - Tools for Reliability, Carrollton, GA

September 28 - Introduction to PLCs - Norcross, GA

September 29 - SLC-500 Introduction - Norcross, GA

September 30 - Tools for Reliability, Covington, GA

October 7 - Tools for Reliability, Cartersville, GA

November 3 & 4 - Travel Packages now Available for Rockwell Automation Fair, Orlando, FL

For more information please  
visit our web site  
[www.mc-mc.com](http://www.mc-mc.com)  
or contact  
**Sonya Minor**  
(770) 825-8600

## The RSB20 Series of Managed Switches Optimize Price/ Performance Ratios



The new Hirschmann™ RSB20 series of managed switches consists of 16 models that are distinguished by the number and type of ports offered, factory settings for EtherNet/IP and specific operating temperature ranges. This provides an economically attractive entry into the segment of managed switches, where customers only pay for their exact equipment (feature and function) needs. The RSB20 portfolio permits customized, hardened and reliable communications solutions without compromising quality.

The RSB20 series provides customized communications solutions with design features that adapt to any application without compromising quality or system performance. Special versions have been optimized for specific applications in addition to a "universal version" with three small form-factor pluggable (SFP) transceiver ports.

## Lithonia IBZ

*I-BEAM Energy Saving  
Fluorescent High Bay*



The Lithonia I-BEAM® IBZ is an energy-saving fluorescent high bay solution that is an ideal one-for-one replacement of common metal halide high bay systems. Its configurable design supports many options and accessories that would satisfy almost any High Bay application. Typical applications include manufacturing, warehousing, institutional and retail facilities. The configurable design of the I-BEAM IBZ allows wireguards, lenses, tandem kits and sensors to be quickly installed in either our factory or in the field. The Integrated Modular Plug (IMP) feature further enhances the flexibility by allowing plug-and-play components such as sensors and photocells. Using the most advanced ballast technology available, the Cool Running Plus™ Technology ballast is integrated into the T5HO IBZ System to provide reliable operation in ambient environments up to 155F (68C), and is paired with energy saving lamps to provide an additional 5W energy savings per T5HO lamp with a 5 year warranty.

**Carrollton Branch**  
102 Cable Industrial Way

**Cartersville Branch**  
329 Industrial Park Rd., NE Suite B

**Covington Branch**  
9120 Old City Pond Rd., NE

**Norcross Branch**  
6685 Best Friend Rd.

Contact us at ♦ Phone: (770) 825-8600 ♦ Website: [www.mc-mc.com](http://www.mc-mc.com)

