

THE Electrical Connection

September 2010

Ann Arbor • Flint • Madison Heights



McNAUGHTON-McKAY
ELECTRIC COMPANY

Serving Our S. E. Michigan
Electrical Community for 100 Years!

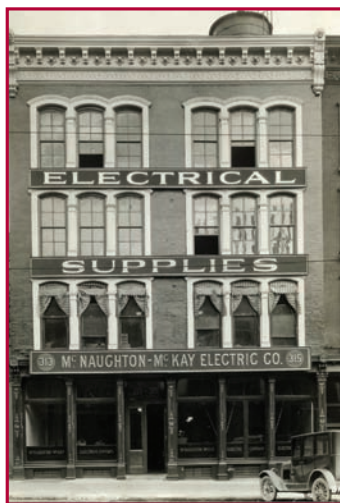
Come Join Us for Our 100th Anniversary Open House Celebrations

Madison Heights – September 16th

Ann Arbor – September 21st

Flint – September 29th

11:00 a.m. – 7:00 p.m.



McNaughton-McKay Electric Company of Michigan invites you to join us at our 2010 Customer Appreciation Open Houses as we celebrate 100 years of customer service in the electrical industry. This event will include a showcase of new products and solutions from our key suppliers. On September 16th the Madison Heights location will be presenting reviews of local automotive and process applications utilizing Energy Efficiency, Motion, Safety, and Information/Networking technologies. Mark your calendars today to join us for some great food and terrific prizes.

**Application Review Schedule and Registration Open
at www.mc-mc.com**



Drive Headquarters-2010 Seminars

OCTOBER 13

9:00 AM -4:00 PM

Lunch provided

1357 E. Lincoln Ave.

Madison Heights

Register at www.mc-mc.com

Seminars:

- Recommended Practices for wiring and grounding VFD's
- Energy Efficiency Improvements through VFD's
- EISA (Energy Independence and Security Act) - What does it mean to me?
- Introduction to Powerflex 750
- Introduction to Logix19, SIP Motion with VFD's

November 3 & 4 - Travel Packages Now Available for Rockwell Automation Fair, Orlando, FL

The RSB20 Series of Managed Switches Optimize Price/ Performance Ratios

The new Hirschmann™ RSB20 series of managed switches consists of 16 models that are distinguished by the number and type of ports offered, factory settings for EtherNet/IP and specific operating temperature ranges. This provides an economically attractive entry into the segment of managed switches, where customers only pay for their exact equipment (feature and function) needs. The RSB20 portfolio permits customized, hardened and reliable communications solutions without compromising quality.



The RSB20 series provides customized communications solutions with design features that adapt to any application without compromising quality or system performance. Special versions have been optimized for specific applications in addition to a "universal version" with three small form-factor pluggable (SFP) transceiver ports.

Lithonia IBZ

*I-BEAM Energy Saving
Fluorescent High Bay*



The Lithonia I-BEAM® IBZ is an energy-saving fluorescent high bay solution that is an ideal one-for-one replacement of common metal halide high bay systems. Its configurable design supports many options and accessories that would satisfy almost any High Bay application. Typical applications include manufacturing, warehousing, institutional and retail facilities.

The configurable design of the I-BEAM IBZ allows wireguards, lenses, tandem kits and sensors to be quickly installed in either our factory or in the field. The Integrated Modular Plug (IMP) feature further enhances the flexibility by allowing plug-and-play components such as sensors and photocells.

Using the most advanced ballast technology available, the Cool Running Plus™ Technology ballast is integrated into the T5HO IBZ System to provide reliable operation in ambient environments up to 155F (68C), and is paired with energy saving lamps to provide an additional 5W energy savings per T5HO lamp with a 5 year warranty.

Ann Arbor Branch
(734) 995-9515

Flint Branch
(810) 238-5611

Madison Heights Branch
(248) 399-7500

www.mc-mc.com

