

THE Electrical Connection

December 2010

Ann Arbor • Flint • Madison Heights



McNAUGHTON-McKAY
ELECTRIC COMPANY

Serving Our S. E. Michigan
Electrical Community for 100 Years!

New Modular for Faster Availability

What IS the Bulletin 500 Modular Kit?

The Bulletin 500 Modular Kit is the same premium quality Allen-Bradley® brand contactor or starter that you've trusted for years, but now with the advantage of stocked, modular components in a single carton. Ordering is easy, with the same catalog number. For example, a NEMA size 1, non-reversing, full-voltage starter with eutectic alloy overload and surge suppression protection is a 509-BOD-17.

The Allen-Bradley Bulletin 500 line of NEMA contactors and starters has solved many customer applications over the years resulting in thousands of different open-type configurations. Providing these different configurations in a timely manner can be a challenge – until now.

Rockwell Automation introduces the Bulletin 500 line of NEMA contactors and starters in a new modular kit format. Modular kits provide maximum flexibility – how you want it and when you need it – in leadtimes of three days or less.

Modular kits are available in NEMA sizes 0...4 for open-type Bulletin 500 top-wired contactors, Bulletin 500F feed-through contactors and Bulletin 509 starters.



ENPHASE MICROINVERTER

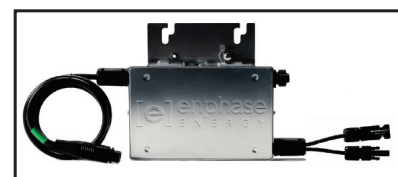
The Enphase Energy Microinverter System improves energy harvest,

increases reliability, and dramatically simplifies design, installation and management of solar power systems. The Enphase system includes the microinverter, the Envoy Communications Gateway, and the web-based Enlighten monitoring and analysis website.

The Enphase Microinverter shifts DC to AC conversion from a large, centralized inverter to a compact unit attached directly to each solar module in the power system. Distributing the conversion process to each module makes the entire solar power system more productive, reliable, smarter and safer than traditional inverter systems.

The Enphase Energy Microinverter System solves solar power challenges by performing Maximum Power Point Tracking (MPPT) at each solar module. MPPT is an algorithm used to calculate and respond to temperature and light changes detected on a solar power system, and to determine how much power to draw from the module. In contrast, centralized inverter's MPPT algorithm sees the entire solar power system as a single module, and responds to the lowest production numbers it detects.

The Enphase MPPT algorithm works at each solar module in an installation and achieves greater than 99.6% accuracy which enables it to maximize energy harvest at all times, even during variable light conditions. Tests show systems using Enphase Microinverters increase energy harvest by as much as 25% over systems using traditional inverters.



Upcoming Training & Events

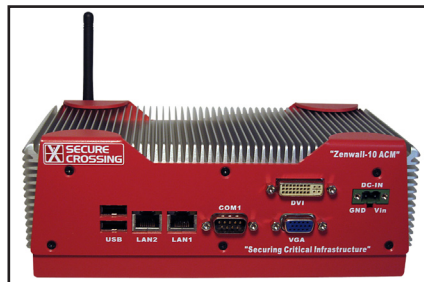
- January 25: FactoryTalk View SE Maintenance and Troubleshooting - Troy, MI
- February 1: Motion Control Fundamentals - Troy, MI
- February 15: GuardLogix Maintenance and Troubleshooting - Troy, MI
- February 21: Kinetix 6000 Maintenance and Troubleshooting - Troy, MI
- February 23: RSLogix 5000 Level 4: Motion Programming Using Ladder Logic - Troy, MI
- February 23: Machine Safeguarding Seminar - Madison Heights, MI
- February 24: LOTO/PPE/ArchFlash Safety Seminar- Madison Heights, MI

For more information please
visit our website
or contact
Rainie Robinson
robinsor@mc-mc.com
(248) 582-2485

Secure Crossing Provides Security, Flexibility and Value

The Zenwall-10 delivers secure enterprise-level connectivity and protocol filtering while providing remote connectivity to PACs or process control systems. The module filters critical data from processes, feeding MES or ERP systems with data and remotely monitoring systems from anywhere in the world, reducing hardware requirements and travel costs. This helps enable manufacturing processes to be spread over different sites and/or facilities.

The Zenwall-10® Access Control Module (ACM) from Secure Crossing is a powerful, compact, rugged industrial firewall that contains many advanced features all in one unit. Standard features include advanced industrial protocol filtering; secure SSL and IPsec VPN connectivity; WIFI; USB-connectable EVDO or GSM cellular; Ethernet-to-Serial conversion; advanced routing; bridging; load balancing; and a remote configuration backup system.

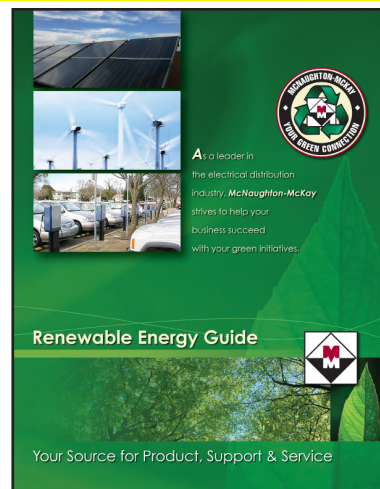


Renewable Energy Guide

Your Source for Product, Support and Service

McNaughton-McKay's new Renewable Energy Guide is now available. As a leader in the electrical distribution industry, we strive to help your business succeed with your green initiatives. We hope that this guide will provide you with information about the products we offer, and the service and support we provide.

For over 100 years, McNaughton-McKay has been in the forefront of electrical innovation. We are your "Green Connection" to product support, application assistance, technical guidance, and system consultation. You can depend on McNaughton-McKay for: Offering a large local product inventory, Ongoing project management, Logistics support, Warranty management and Available Credit.



Ann Arbor Branch
(734) 995-9515

Flint Branch
(810) 238-5611

Madison Heights Branch
(248) 399-7500

www.mc-mc.com

