

# THE Electrical Connection

June 2011

Charlotte, NC • Gastonia, NC  
Greenville, SC • Spartanburg, SC

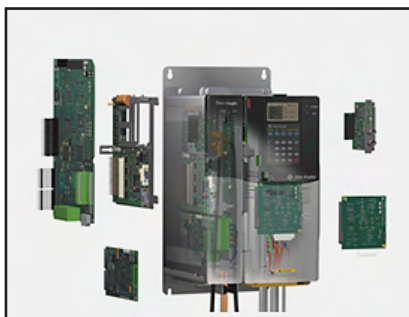


**McNAUGHTON-McKAY**  
ELECTRIC COMPANY

Serving The Carolina Electrical  
Community for 100 Years and Counting!

## Drives Safety Features

Many of Allen-Bradley's PowerFlex® drives offer certified safety options—Safe Torque-Off and Safe Speed Monitor—to help provide integral, cost-effective, and certified protection for AC drive control.



The PowerFlex 750-Series speed-monitoring safety option features five inputs, three sets of safety outputs, and one bipolar safety output. Each of the inputs support a specific safety function.

- Safe Stop (SS)
- Safe Limited Speed Monitoring (SLS)
- Door Monitoring (DM)
- Enabling Switch Monitoring (ESM)
- Lock Monitoring (LM)

An additional reset input provides for reset and monitoring of the safety circuit. The safety option can be used in single-axis or multi-axis applications, and can be configured as a master or slave based on its location in the system.

## 381 Remote Display True-rms AC/DC Clamp Meter with iFlex™

*The first clamp meter with a detachable, remote display for easier, faster, safer measurements*



The new Fluke 381 does everything you would expect from a clamp meter, and then lets you remove the display for even more flexibility. Now one technician can do jobs that used to require two people; clamp the Fluke 381 around a conductor, remove the display and walk across the room to operate controls or remove protective equipment, all while watching real-time readings. The new iFlex™ flexible current probe (included) expands the measurement range to 2500 A ac while providing increased display flexibility, ability to measure awkward sized conductors and improved wire access.

## Upcoming Training

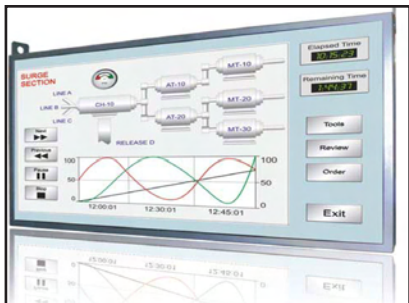
- May 21 & 22: Introduction to Automation & Integrated Architecture - Charlotte, NC
- June 7: Introduction to PLC - Charlotte, NC
- June 8: SLC & Micrologix - Charlotte, NC
- June 19 & 20: RSLogix 5000 Level 1: ControlLogix System Fundamentals - Greenville, SC
- June 21 & 22: RSLogix 5000 Level 2: Basic Ladder Logic Interpretation - Greenville, SC
- June 26 - 29: RSLogix 5000 Level 3: ControlLogix Maintenance & Troubleshooting - Charlotte, NC
- Aug. 1 - 5: RSLogix Level 1: ControlLogix Fundamentals & Troubleshooting - Charlotte, NC

For more information please  
visit our website  
or contact  
**Becky Walters**  
(864) 574-0350 or  
(800) 537-4855

## DYNICS LX Series

### Industrial Enclosure Display

Dynics, a dynamic industrial computer solutions company, is focused on providing high quality industrial hardware, and offers the most comprehensive, flexible product line with custom integration.



Their LX Series is a light duty and cost effective sealed enclosure that is designed with Commercial/Industrial-Grade LCD technology for digital signage 16-24/7 operation that utilizes a universal mounting system for ceiling mount with industrial eyebolts welded into the metal structure or Wall Mount with VESA Pattern 400/600mm. Then enclosure is made of rugged 16ga steel with standard black powder coat finish.

## Save Up to 35% of Your Energy Costs

### BERT Eliminates Wasted Energy!

Computers, copiers, printers, faxes, vending machines, microwaves, shredders, water coolers, signage, coffee makers, TVs, electronic devices, and lighting all leak energy in stand-by or off mode. Powering down these machines automatically during late night hours can save as much as \$200 per machine per year without replacing existing equipment. BERT itself draws virtually no wattage (1 microwatt).



BERT keeps it simple and easy. It is a wireless smart plug with a programmable on/off schedule, providing extraordinary ability to cut energy costs. The EPA estimates that 30% of energy usage in commercial buildings is used inefficiently or unnecessarily. BERT fixes all that. BERT provides 24 hour wireless control over one or multiple pieces of your organization's equipment, quickly and easily turning the equipment on or off via a programmed schedule or on command from a computer. BERT software tracks system activity and lets you know what you are saving.

Charlotte, NC Branch  
4527 Dwight Evans Rd.

Gastonia, NC Branch  
1408 Castle Court

Greenville, SC Branch  
35 Old Mill Rd.

Spartanburg, SC Branch  
9115 Warren H. Abernathy Hwy.

Contact us at ♦ Phone: (800) 537-4855 ♦ Website: [www.mc-mc.com](http://www.mc-mc.com)

