

# THE Electrical Connection

June 2011

Carrollton • Cartersville  
Covington • Norcross



**McNAUGHTON-McKAY**  
ELECTRIC COMPANY

Serving The Georgia Electrical  
Community for 100 Years and Counting!

## Resolve Technical Issues Quickly & Accurately with TechConnect Support



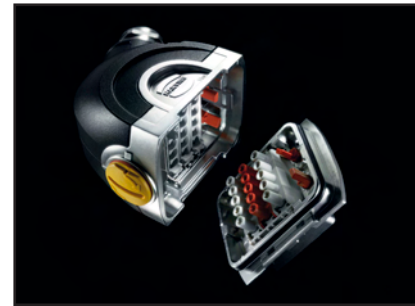
Whether you are dealing with a leaner staff, an aging workforce, reduced budget or just want help, Rockwell Automation TechConnect Support is there for you. Increase your competitive advantage by leveraging our real-time remote support organization. Our online and phone support capabilities give you more efficient and flexible options to access our support engineers, when you need them most.

- Regionally-based certified remote support centers
- 24x7x365 support available
- More than 350 dedicated, technical support engineers
- Annual training to maintain and build competency
- Fully-equipped workstations and labs to simulate your architecture and respond quickly

Click [here](#) to learn more about the details of TechConnect Support, or to contact Sonya Minor, [minor@mc-mc.com](mailto:minor@mc-mc.com), to discuss how this service can work for you....

## Reinventing Connection Technology

*HARTING introduces the Han-Yellock® connector series - the next generation of connection technology.*



The Han-Yellock® is a completely new connector series developed from several years of market feedback. The sleek new design of the new Han-Yellock series is aesthetically pleasing yet tremendously effective for harsh environments.

The new product combines many new unique features within one connector, most noticeably a new integral locking system which incorporates a patented push button technology and a departure from the existing lever design for latching and un-latching rectangular connectors. The new product allows for simple installation as well as a method for locking the product simply by turning one of the push buttons 90 degrees, thus reducing the chance for unauthorized access without the use of a tool.

## Upcoming Training

**June 13 - 16:** Level I Thermography Certification - Norcross, GA

**June 28:** Introduction to Logix 5000 - Cartersville, GA

**June 29:** Introduction to Ethernet - TCP/IP - Cartersville, GA

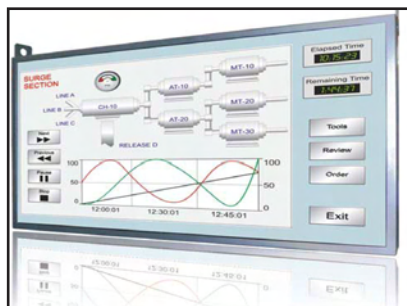
Click on the course listings for detailed information and to register or for more information on upcoming training classes please visit our website [www.mc-mc.com](http://www.mc-mc.com)

Contact Sonya Minor  
770-825-8628

## DYNICS LX Series

*Industrial Enclosure Display*

Dynics, a dynamic industrial computer solutions company, is focused on providing high quality industrial hardware, and offers the most comprehensive, flexible product line with custom integration.



Their LX Series is a light duty and cost effective sealed enclosure that is designed with Commercial/Industrial-Grade LCD technology for digital signage 16-24/7 operation that utilizes a universal mounting system for ceiling mount with industrial eyebolts welded into the metal structure or Wall Mount with VESA Pattern 400/600mm. Then enclosure is made of rugged 16ga steel with standard black powder coat finish.

## Save Up to 35% of Your Energy Costs

*BERT Eliminates Wasted Energy!*

Computers, copiers, printers, faxes, vending machines, microwaves, shredders, water coolers, signage, coffee makers, TVs, electronic devices, and lighting all leak energy in stand-by or off mode. Powering down these machines automatically during late night hours can save as much as \$200 per machine per year without replacing existing equipment. BERT itself draws virtually no wattage (1 microwatt).

BERT keeps it simple and easy. It is a wireless smart plug with a programmable on/off schedule, providing extraordinary ability to cut energy costs. The EPA estimates that 30% of energy usage in commercial buildings is used inefficiently or unnecessarily. BERT fixes all that. BERT provides 24 hour wireless control over one or multiple pieces of your organization's equipment, quickly and easily turning the equipment on or off via a programmed schedule or on command from a computer. BERT software tracks system activity and lets you know what you are saving.



**Carrollton Branch**  
102 Cable Industrial Way

**Cartersville Branch**  
329 Industrial Park Rd., NE Suite B

**Covington Branch**  
9120 Old City Pond Rd., NE

**Norcross Branch**  
6685 Best Friend Rd.

Contact us at ♦ Phone: (770) 825-8600 ♦ Website: [www.mc-mc.com](http://www.mc-mc.com)

