

THE Electrical Connection

October 2011

Ann Arbor • Flint • Madison Heights

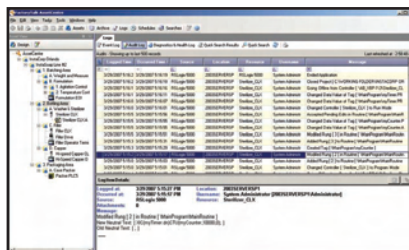


McNAUGHTON-McKAY
ELECTRIC COMPANY

Serving Our S. E. Michigan Electrical Community for 100 Years and Counting!

Rockwell FactoryTalk® AssetCentre

Maximize Your Automation and Process Investment



FactoryTalk® AssetCentre provides you with a centralized tool for securing, managing, versioning, tracking and reporting automation related asset information across your entire enterprise. And perhaps more importantly, it can do this automatically, with limited additional management oversight or work from employees.

FactoryTalk AssetCentre can impact uptime, productivity, quality, employee safety or regulatory compliance. Whatever your area of concern, FactoryTalk AssetCentre and its flexible, scalable solution can help you and your organization meet your asset uptime goals.

With FactoryTalk AssetCentre, you can:

- Secure access to the system
- Track detailed users' actions
- Manage historical versioning of any electronic file
- Provide automatic backup and compare operations on supported devices
- Configure process instrumentation
- Manage instrumentation calibration schedules and certificates

The scalable design of FactoryTalk AssetCentre allows for easy expansion of assets and extensible (add-on) capabilities — it's adaptable from small line applications to plant-wide installations. It is built on a server that provides common base functions and extendable add-on capabilities that help you leverage certain functions for specific automation asset types. It is this integrated and modular design that lets the system grow as your business goals and production needs change.

Panasonic Toughbook® 53

Enhanced performance and versatility from the original semi-rugged laptop manufacturer.



In 1998, Panasonic created the first semi-rugged computer. Now, Panasonic introduces the latest

generation, the Panasonic Toughbook® 53. With a 14" HD LED display, the latest Intel® Core™ processors and an oversized multi touch touchpad, it performs like a desktop. Options for a sunlight-viewable Panasonic CircuLumin™ touchscreen, backlit keyboard, 4G LTE mobile broadband, an integrated webcam and enhanced connectivity make this the most versatile semi-rugged PC ever.

- 14" High Definition (720p) LED Display
- Sunlight-viewable Touchscreen with Panasonic CircuLumin™ Technology
- Oversized Touchpad with Multi Touch
- Magnesium Alloy Case with Handle
- Drop and Spill-resistant
- Choice of 3G Gobi™ or 4G LTE Mobile Broadband

Upcoming Training & Events

- October 4 & 5: AC/DC Motors and Drives Fundamentals – Troy, MI
- October 11: Information and Productivity Clinic - Madison Heights, MI
- October 11 & 12: RSLogix 5000 Level 1: ControlLogix System Fundamentals - Troy, MI
- October 13 & 14: RSLogix 5000 Level 2: Basic Ladder Logix Programming - Troy, MI
- October 19: Cognex In-Sight Explorer Spreadsheet Basic Training - Toledo, OH
- October 25 - 28: FactoryTalk View ME and PanelView Plus Programming - Troy, MI
- November 16 & 17: 2011 Rockwell Automation Fair – Chicago, IL

For more information please visit our website or contact Vicki Isom
isomv@mc-mc.com
(248) 582-2485

Fusion G7™

Wall-Mount Enclosures feature 3D mounting capability with metric sizing.



Pentair Technical Products' Hoffman brand Fusion G7™ is the ultimate wall-mount enclosure platform designed to global standards that takes internal component mounting versatility and rugged IP66 protection to the next level. Featuring an advanced, scalable design with a host of internal component mounting provisions and options, Fusion G7 facilitates door, side panel and back panel mounting flexibility, expanding the traditional limits of capacity and creating the most efficient and cost-competitive enclosure footprint available.

Thirty standard metric sizes ranging from:

- 300-1500 mm high
- 300-900 mm wide
- 150-425 mm deep

ULTRA HD Professional Series LED PAR Lamps

High Definition Lighting by Sylvania



The SYLVANIA ULTRA HD Professional Series family of LED PAR lamps offers premium performance in every category. With exceptional color quality, efficiency, and electrical design standards, this top-tier family of lamps is designed to ensure the highest aesthetics while complying with the most stringent sustainability goals. Designed to be the most efficient replacements for halogen at 3000K, these SYLVANIA LED lamps last up to 10 times longer and are rated for use in damp locations. An optimized LED selection process is used to ensure that color within the ULTRA HD Professional family of LED lamps is extremely consistent, within a 3-step MacAdam ellipse. With outstanding color rendering capabilities (95 CRI) and exceptionally rich deep red content (R9>60), ULTRA HD Professional Series LED lamps enhance warm color palettes and make whites more crisp, making them ideal for residential, hospitality, healthcare, or retail applications. With lamp efficacies higher than 50 lumens per watt and smooth dimming performance, ULTRA HD Professional Series LED lamps are an ideal part of any energy-conservation strategy.

Ann Arbor Branch
(734) 995-9515

Flint Branch
(810) 238-5611

Madison Heights Branch
(248) 399-7500

www.mc-mc.com



McNAUGHTON-McKAY
ELECTRIC COMPANY
YOUR ELECTRICAL CONNECTION