

LX SERIES



Industrial Enclosure Display

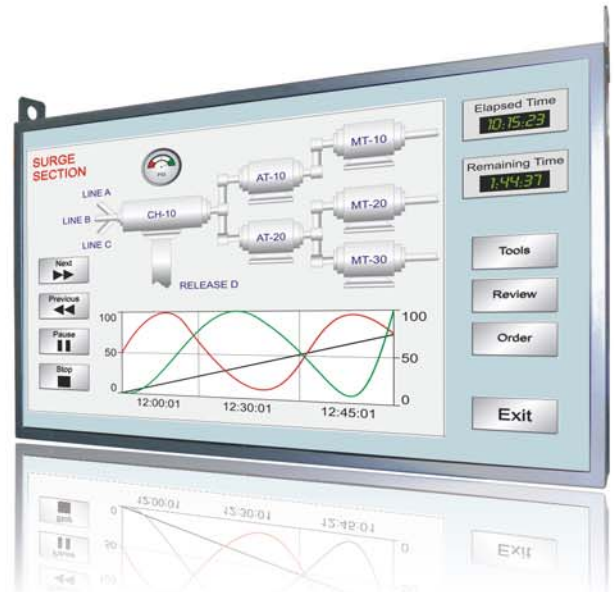
DATASHEET

Description

The LX Series is a light duty and cost effective sealed enclosure designed with a choice of a standard Commercial Grade monitor (16 Hour per day runtime operation) or an Industrial Grade monitor (24/7 runtime operation) that utilizes a universal mounting system for ceiling mount with industrial eyebolts welded into the metal structure or Wall Mount with VESA Pattern 400/600mm. The enclosure is made of rugged 16ga steel with standard black powder coat finish.

Key Features

- Rugged modular steel construction built to order. Sizes 32" to 55"
- Heavy duty eyebolts ready for ceiling mounting
- Power Supply and Video Controls accessible from the back cover. No front door



Specifications

LX SERIES MONITOR DISPLAY					
SPECS	LX32	LX42	LX46	LX52	LX55
Display Size	32"	42"	46"	52"	55"
Resolution	SXGA 1366 x 768	SXGA 1920 x 1080	SXGA 1920 x 1080	SXGA 1920 x 1080	SXGA 1920 x 1080
Viewing Angle	H: 178°, V: 178°	H: 176°, V: 176°	H: 176°, V: 176°	H: 178°, V: 178°	H: 178°, V: 178°
Contrast Ratio	1200:1	1000:1	1000:1	800:1	700:1
Power Consumption	Approx. 175W	Approx. 250W	Approx. 275W	Aprox. 320W	Approx. 375W
Aspect Ratio	16:9	16:9	16:9	16:9	16:9
Grade	Commercial Rate (16 Hours per day run-time) or Industrial Rate (24/7 run-time) options				
Bulb Life	CCFT Back Life estimated to be about 50,000 hours				
Interface Lens	Optical Multi-Touchscreen, 4-6 mm Hardened Protective Glass OR Protective Lexan Lens				
Enclosure	NEMA 12 powder coated steel, black standard, custom colors & finishes available. Secure Unistrut & eyebolts included for mounting				
Activation	Finger, gloved hand, or any non-sharp pointing device				
Accuracy	±2 mm, over 90% of the screen				
Warranty	24 Month Limited Warranty. Extended warrantly available, contact us for more details				

Back View

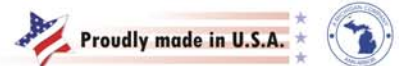


Visit us online at:

www.dynics.com
www.panelworx.com

DYNICS / PANELWORX

4330 Varsity Drive, Ann Arbor, MI 48108
 Ph. 734.677.6100 • Fax: 734-677-6105



Dimensions

DIMENSIONS

	LX32	LX42	LX46	LX52	LX55
Height	22.75"	27.75"	28.75"	30.75"	31.75"
Width	32.85"	44.10"	44.75"	50.50"	52.50"
Depth	6.53	6.53	6.53"	6.53"	6.53"
Weight	40 lbs	45 lbs	55 lbs	75 lbs	95 lbs

Drawing

