

PROTECTING YOUR ADVANTAGE

*Hoffman*<sup>®</sup>



# SYSPEND<sup>®</sup> Sanitary HMI System



# The comprehensive HMI solution for demanding sanitary environments.

IP69K and Type 4X; HMI suspension up to 90 lbs.

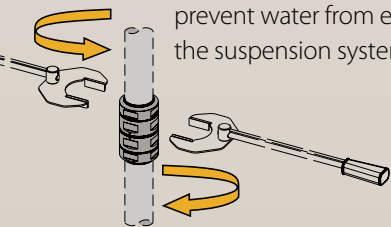


## SYSPEND® Sanitary HMI System delivers clean design and versatile configuration options.

Demanding food and beverage, pharmaceutical and packaging applications depend on robust protection—that doesn't sacrifice functionality. Pentair Technical Products' Hoffman brand SYSPEND® Sanitary HMI System is an HMI enclosure and suspension system set—designed to reliably enclose, protect and suspend lightweight HMI devices in these challenging sanitary environments.

- Rugged features including a slanted flange trough collar, 20-degree sloped top, and one-piece closed-cell silicone gasketing designed for superior washdown protection
- 304 stainless steel construction provides corrosion resistance and ease of cleaning
- Type 4X and IP69K protection in high pressure, high temperature washdown applications
- Minimal bacteria catch points; no exterior bolts, set screws, or obtrusive hardware when bracket covers are used
- Unique SYSPEND-LOK™ fitting system provides a multi-gasketed labyrinth to

prevent water from entering the suspension system

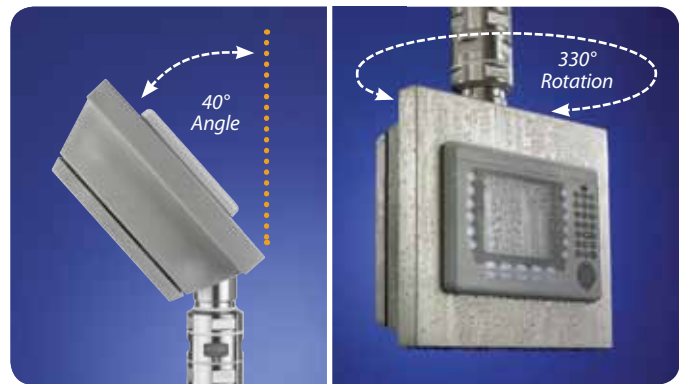


## Why IP69K protection?

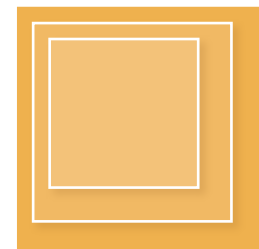
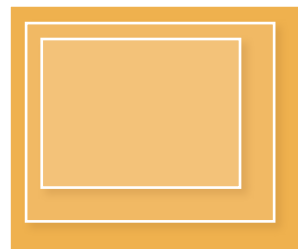
The IP69K standard requires water pressure between 1160 to 1450 psi at a rate of 3.69 to 4.2 gallons/minute and a temperature of 176° F. The water nozzle is placed 3.9 to 5.9 in. away from the target and is sprayed from four angles—0, 30, 60 and 90 degrees for 30 seconds each. The result? A sanitary working platform, integrity assured by Hoffman.

## The SYSPEND® Sanitary HMI System provides versatile functionality with a host of robust features and configuration options.

- Modular design, with multiple tube lengths and straight, L and U-shaped tubes, allows for application versatility
- 330° rotation of joints for easy repositioning
- SYSPEND-LOK fittings attach without set screws to minimize bacteria catch points, providing a secure installation with leveling capability
- Full range of enclosure modifications are available



Ergonomic positioning



Standard enclosure sizes ranging from 300 x 300 mm to 500 x 600 mm, with depth options of 150 and 200 mm. Straight and curved tube lengths from 250 mm to 1500 mm.

## Limitless configuration options.



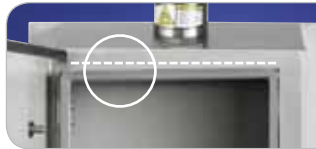
System load capacity varies by configuration. Reference the SYSPEND Sanitary HMI System Specification Sheet for the Load Capacity Graph and configuration suggestions.



**SYSPEND-LOK swivel couplings** provide 330-degree rotation at enclosure

**Modular design** with multiple tube lengths and straight, L and U-shaped tubes allows for application versatility

**SYSPEND-LOK fixed couplings** provide secure connection point between tubes



**Slanted flange trough collar** prohibits pooling of fluids along top edge of enclosure opening



**Integrated side handles** allow for easy repositioning of enclosure

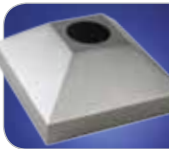


**Reversible 20-degree sloped top** facilitates runoff of water and cleaning solutions, and prohibits the placement of objects on top of enclosure

**One-piece closed-cell silicone gasket** is easily replaceable and fully concealed for complete washdown protection

**Flat area provided** for installation of H<sub>2</sub>OMIT<sup>®</sup> Vent Drain (sold separately) for condensation removal

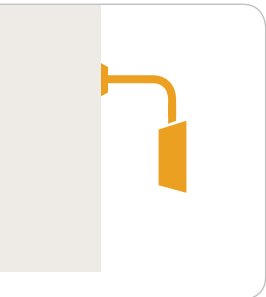
**SYSPEND-LOK base brackets** provide secure attachment to wall, floor or machine with 330-degree rotation and easy leveling capability



**Optional bracket cover** can be used on wall, floor or machine to cover exposed hardware



**Optional adapter** available for mounting enclosure to the SYSPEND VHDS-Motion arm



## About Pentair Technical Products

Pentair Technical Products, a Pentair global business unit, is the leading provider of worldwide product and service solutions for enclosing, protecting and cooling electrical and electronic systems. Its industry-leading brands—Hoffman®, Schroff®, McLean® Cooling Technology, Calmark®, Birtcher®, Aspen Motion Technologies™ and Taunus™—provide a broad variety of standard, modified and engineered solutions to the commercial, communications, energy, general electronics, industrial, infrastructure, medical, and security and defense markets.



### NORTH AMERICA

#### Pentair Technical Products

2100 Hoffman Way  
 Anoka, MN 55303-1745  
 Tel: +1 (763) 421-2240

170 Commerce Drive  
 Warwick, RI 02886  
 Tel: +1 (401) 732-3770

7328 Trade Street  
 San Diego, CA 92121  
 Tel: +1 (858) 740-2400

1120 Rock Road  
 Radford, VA 24141  
 Tel: +1 (540) 639-4440

#### Pentair Technical Products

Hoffman Enclosures Inc.  
 111 Grangeway Ave., #504  
 Scarborough, ON M1H 3E9  
 Tel: +1 (416) 289-2770

#### Pentair Technical Products

Hoffman Enclosures Mexico,  
 S. de R.L. de C.V.  
 Arquimedes 33 Piso 1  
 Colonia Palmas Polanco  
 Mexico DF 11560  
 Tel: +52 55 5280 1449

### SOUTH AMERICA

#### Pentair Technical Products

Pentair Taunus Electrometalurgica Ltda  
 Rua Joao Marcon, 165  
 18550.000 – Centro Boituva – SP Brazil  
 Tel: +55 15 3363 9100

### EUROPE

#### Pentair Technical Products

Schroff GmbH  
 Langenalber Straße 96-100  
 75334 Straubenhardt, Germany  
 Tel: +49 (0)7082 794-0

#### Pentair Technical Products

Schroff UK Ltd.  
 Maylands Avenue  
 Hemel Hempstead  
 Herts HP2 7DE Great Britain  
 Tel: +44 (0)1442 240 471

#### Pentair Technical Products

Schroff SAS  
 Z.I. 4, rue du Marais  
 Boite Postale 16  
 67660 Betschdorf, France  
 Tel: +33 (0)3 88 90 64 90

### EUROPE

#### Pentair Technical Products

Schroff Scandinavia AB  
 Flygfältsgatan 11  
 P.O. Box 2003  
 12821 Skarpnäck, Sweden  
 Tel: +46 (0) 8 683 61 00

#### Pentair Technical Products

Schroff Scandinavia AB  
 Peräsimentie 8  
 FIN-03100 Nummela  
 Finland  
 Tel: +358 9 222 68 00

#### Pentair Technical Products

Schroff S.r.l.  
 Via Brughiera 1  
 20010 Pregnana Milanese (MI)  
 Italy  
 Tel: +39 02 932 714-1

#### Pentair Technical Products

Schroff GmbH/  
 Sp.z.o.o./-oddzial w Polsce  
 ul. Marynarska 21  
 PL-02-674 Warszawa Poland  
 Tel: +48 (0) 22 607 06 16

### ASIA

#### Pentair Technical Products

21st Floor of Cloud Nine Plaza  
 No. 1118 West Yan'an Road  
 Changning District, Shanghai  
 P.R. China  
 Tel: +86 400 820 1133

#### Pentair Technical Products India Pvt. Ltd.

Unit 1, Factory 2  
 (Sai Lakshmi Industrial Campus)  
 Kannamangala, Bidarahalli Hobli  
 Whitefield – Hoskote Road  
 Bangalore – 560 067  
 Tel: +91 9632511788

#### Pentair Technical Products

Hoffman Schroff Pte Ltd.  
 18 Boon Lay Way  
 TradeHub 21, #04-110/111  
 Singapore 609966  
 Tel: +65 67985 2213

#### Pentair Technical Products

Schroff K.K.  
 Nisso No.13 Bldg. 4F  
 2-5-1 Shinyokohama  
 Kohoku-ku okohama-shi  
 Kanagawa 222-0033 Japan  
 Tel: +81 (0)45 476 02 81



For worldwide locations, see [pentairtechnicalproducts.com](http://pentairtechnicalproducts.com)