

Product Matrix

	Series	Part Number	Modem Type	IP Router	4 x 10/100mb Ethernet	1 x DI, 1 x DO	1 x RS-232/485 Serial Port	ViewOn Capable	Data Logging	"Isolated" Serial Port	Flash Memory (Mb)	VPN Capable
Serial to Ethernet Gateway	4001	WP41201	Ethernet only		●	●	●	●	●			
Industrial Internet Router Talk2M Compatible	2101CD	WP33204	PSTN 56k	●	●	●					8	●
	4101CD	WP53204	PSTN 56k	●	●	●	●	●	●		8	●
	2101CD	WP33208	EDGE Quad Band	●	●	●					8	●
	4101CD	WP53208	EDGE Quad Band	●	●	●	●	●	●		8	●
Industrial LAN/Modem Router Talk2M Compatible	2005CD	WP26201	Ethernet only	●	●	●	●				32	●
	4005CD	WP46201	Ethernet only	●	●	●	●	●	●		32	●
	2005CD	WP26204	PSTN 56k	●	●	●	●				32	●
	4005CD	WP46204	PSTN 56k	●	●	●	●	●	●		32	●
	2005CD	WP26207	EDGE Quad Band	●	●	●	●				32	●
	4005CD	WP46207	EDGE Quad Band	●	●	●	●	●	●		32	●

Common Software Features

Router (except 4001 series)
IP Forwarding,
Transparent Forwarding,
NAT Firewall,
Dial on Demand,
Username/Password Control

SNMP MIB2
Callback Function by Dialup
Networking
Alarming
Dynamic DNS Support
FTP Client/Server

Web Server and Customizable
Website
Remote Configuration and
Re-programming
BASIC Programming Capability
VCOM



P.O. Box 5533 | Bellevue, WA 98006 USA | Tel: 425-746-9481 | Fax: 425-641-9473
spectrum@spectrumcontrols.com | www.spectrumcontrols.com

Copyright ©2006-2010 Spectrum Controls, Inc., all rights reserved. Printed in USA. Specifications subject to change without notice. WebPort is a trademark of Spectrum Controls, Inc. eWON is a trademark of ACT'L, s.a. The Encompass logo is a trademark of Rockwell Automation.

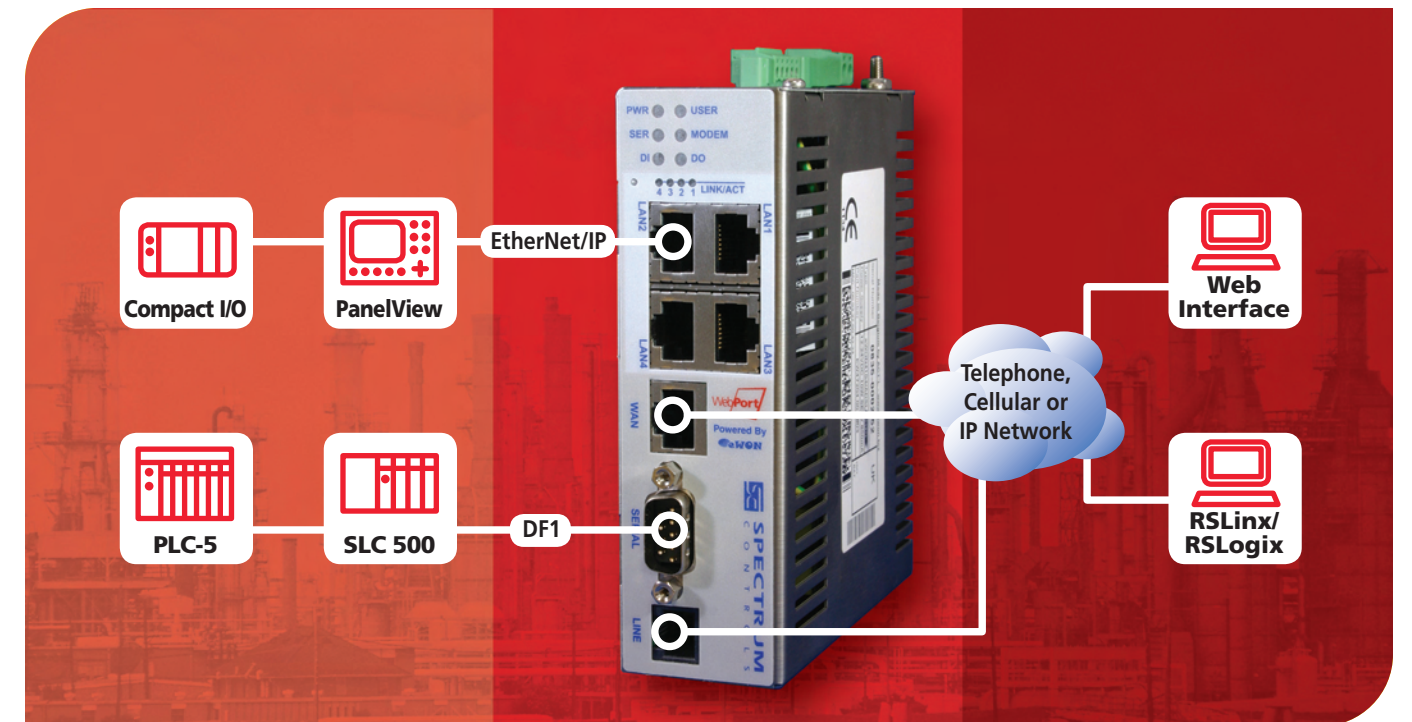


Rev 1/29/10

Remote Access Solutions For Your PLCs



Powered By eWON



What does WebPort offer more than other remote access modems?

- Dual Ethernet/serial connectivity
- Remote maintenance and alarm management
- Data logging and reporting
- Browser based visualization
- Optional Ethernet switching with VPN router

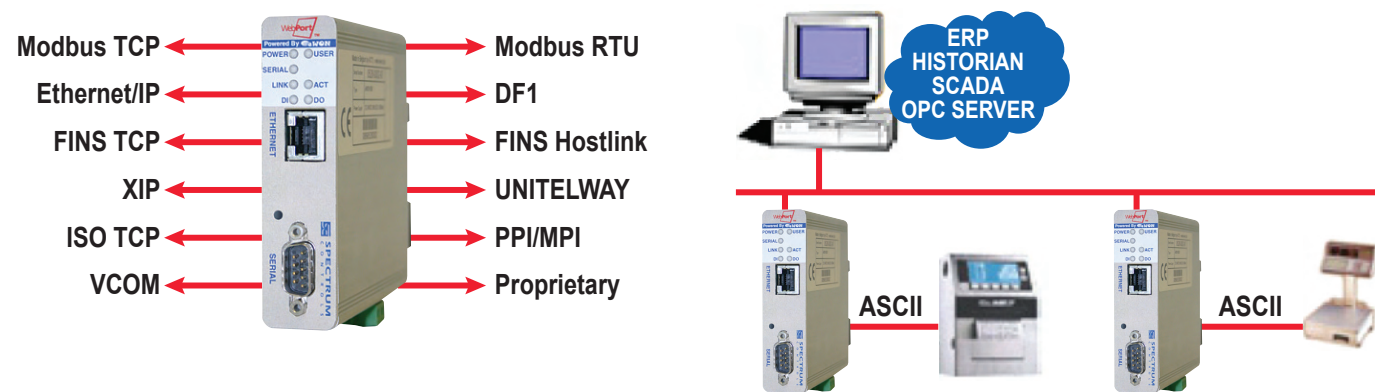
WebPort®, powered by eWON, is an industrial web server that allows you to interact with your automation environment in new ways. Simple to install and use, WebPort provides a cost-effective, yet powerful and flexible pathway to your programmable logic controllers via an IP network or over the Internet.



SPECTRUM
CONTROLS

Ethernet Gateway Functionality: Robust and flexible connectivity

- Transparent:** Directly link serial devices or PLCs to your Ethernet LAN, allowing access to data from any workstation or other factory device.
- Programmable:** Using BASIC language scripting, take full advantage of WebPort's broad versatility and simplicity. Interface with virtually any ASCII serial device via a standard web browser.
- Configurable:** Set up WebPort to poll PLCs through the serial port. Using internal memory tags you can archive the data and publish it over the LAN for use by applications such as SCADA, Historian, OPC servers and ERP tools.

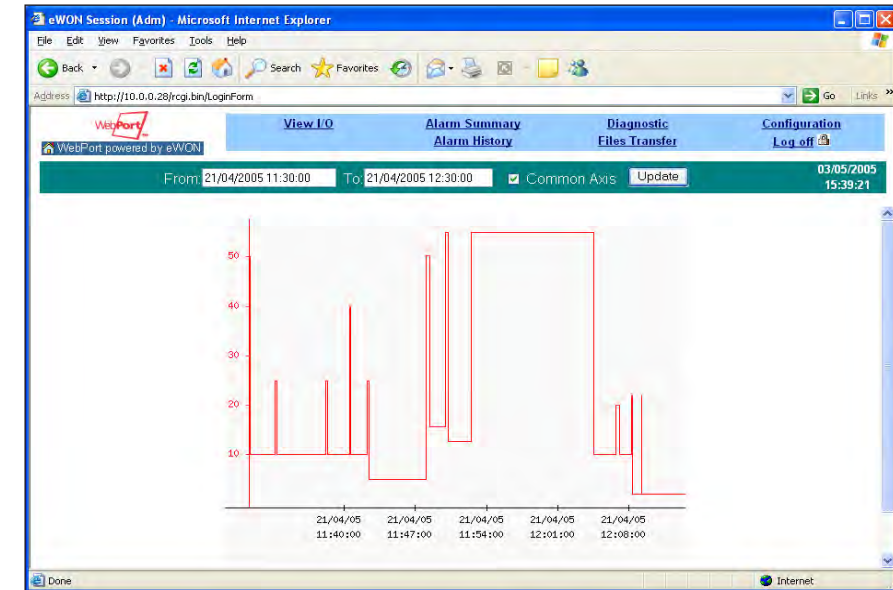


Remote Maintenance & Alarms: Keep in constant touch with your PLC

- Maintenance:** Connect your programming software to your PLC remotely and seamlessly, either point-to-point or over the internet through the optional embedded land line or cell phone modem.
- Alarm Management:** WebPort can acknowledge and trigger multiple actions on each alarm (SMS, email with complex attachments, SNMP traps, etc.). More elaborate actions such as timed cascade notifications can easily be programmed via BASIC scripting.
- Email Service:** If any local device needs to send an email or perform a "put" FTP, WebPort connects to the Internet "on demand" and forwards the request. WebPort's embedded NAT server keeps local IP addresses undisclosed, and the optional VPN version provides full security.

Tag	Time	Alarm Data	Action	Action taken by: "User Name"
VFD#1	05/10/2007 22:16:27	Over-temp 102 C	<input type="checkbox"/> Acknowledge <input type="checkbox"/> Clear	Electrician #23
VFD#2	5/11/2007 03:26:19	Under-voltage	<input type="checkbox"/> Acknowledge <input type="checkbox"/> Clear	Lead #5
Tank#1-Level	5/11/2007 15:48:36	Overflow	<input type="checkbox"/> Acknowledge <input type="checkbox"/> Clear	Mfg. Eng. #3

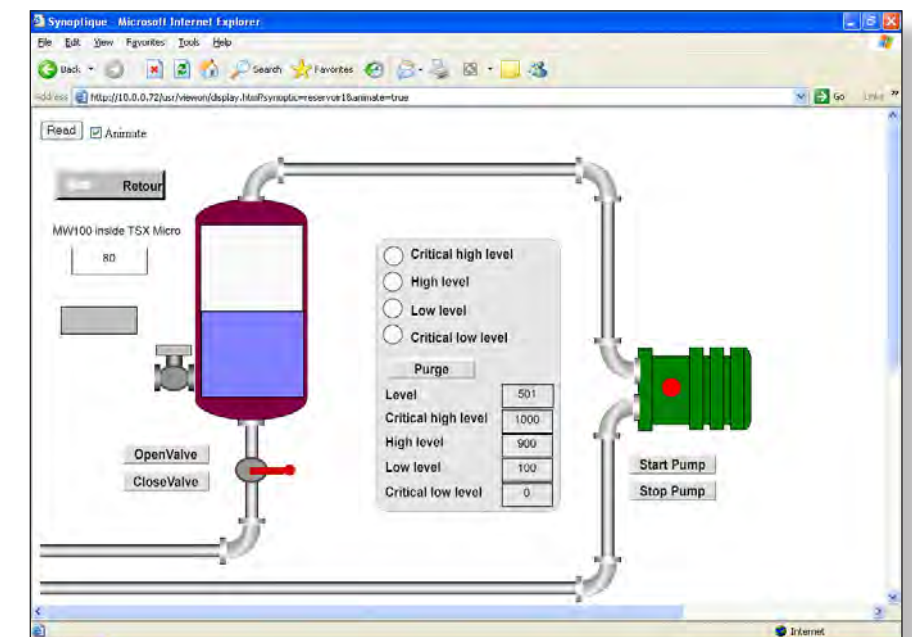
Data Logging, Reporting & Trending: Real-time monitoring on-site



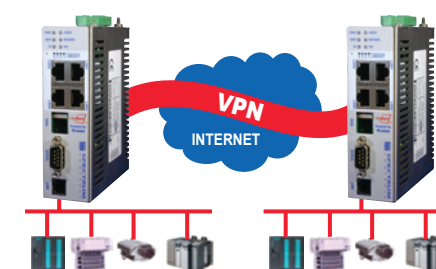
- Historical or Real-Time Logging:** WebPort stores tag data values in its internal database for statistical analysis and later review (historical logging) or to analyze recent trends (real-time logging).
- Reporting:** This data, once captured, can be passed on to higher end management systems on your network. Data can be passed by pre-determined timing, on alarm or by remote request. The user can request the data in either graphical or table form.

Web Visualization: Supervise your automated processes

- Browser-Based Visualization:** Rely on WebPort's embedded Web server to view production behavior through any standard Web browser interface. This provides a highly cost effective HMI, viewable anywhere you are. Optional software lets you create your own animated Web screens, without any specific web programming skills.
- I/O Drivers:** WebPort features an easy to use, menu-driven user interface. It lets you define memory tags and link them to on-screen graphics as well as variables inside your PLC.



Ethernet Switching: Connect up to four Ethernet devices to one WebPort



- Broadband Routing:** In addition to all of the other functions, the WebPort 2005CD & 4005CD offer a built-in four port unmanaged Ethernet switch. An additional WAN uplink provides connection to a broadband Internet router or upstream connection to an enterprise network.
- VPN:** WebPort features optional Virtual Private Networking (standard on the WebPort 2005CD & 4005CD), allowing you to securely connect your devices through the WebPort to remote locations *anywhere in the world* over the Internet.