

Craft Skills

Pipefitting Course Description

COURSE AGENDA

Day One

- Interpreting Codes And Standards
- Defining Terminology
- Using Safe Work Practices
- Reading Piping Drawings
- Using Basic Pipefitting Tools

Day Two

- Applying Bending Techniques
- Distinguishing Metal Piping Types
- Recognizing Non-Metallic Piping

Day Three

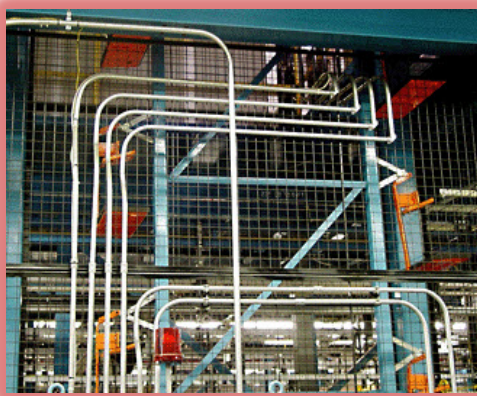
- Distinguishing Tubing Versus Piping
- Applying Tubing Joints
- Tube Bending

Day Four

- Using Welded Connections
- Using Flanges
- Making Threaded Connections

Day Five

- Preparing Joints
- Fitting Joints
- Using Pipe Hangers
- Final Exercise
- Review
- Written Exam



COURSE NUMBER: MMS-250

Course Purpose

This course provides information on the codes and standards, types of piping and associated components, specifications, and fitting and supporting techniques.

Upon completion of this course, you should be able to:

- List and discuss codes and standards associated with pipe and tubing.
- Identify and discuss types of metal piping and their uses.
- Identify and discuss types of non-metallic piping and their uses.
- Identify and discuss types of tubing, including their installation and use.
- Describe the methods used for connecting pipes.
- Describe the components found in a piping system.
- Identify and discuss the types of pipe hangers and their applications.

Who Should Attend

- This course is designed for mechanical technicians.

Curriculum Note: Many of the lessons contained in this course are also contained in course MM-500 in a condensed format.

Prerequisites

To successfully complete this course, the following prerequisites are required:

- None

Facility Requirements

Facility provided equipment and piping.

Student Materials

To enhance and facilitate your learning experience, the following materials are provided as part of the course package.

- *Student Manual*, which contains the key concepts, definitions, and examples presented in the course
- *Lab Guide* which includes the hands-on exercises.

Hands-On Practice

Throughout this course, you will have the opportunity to practice the skills you have learned through a variety of hands-on exercises. These exercises focus on the skills introduced in each lesson.

You will also have the opportunity to combine and practice groups of key skills by completing multiple integrated practices during the course.

Next Learning Level

Once you have mastered the skills covered in this course, you may want to attend specific training, such as:

- *Seals and Packing*

Course Length

- *This is a 5 day course.*

Course Number

- *The course code is MMS-250.*

To Register

To register for this or any other Rockwell Automation training course, contact your local authorized Allen-Bradley Distributor or your local Sales/Support office for a complete listing of courses, descriptions, prices, and schedules.

You can also access course information via the Web at

<http://www.rockwellautomation.com/training>

All trademarks and registered trademarks are property of their respective companies.

www.rockwellautomation.com

Power, Control and Information Solutions Headquarters

Americas: Rockwell Automation, 1201 South Second Street, Milwaukee, WI 53204-2496 USA, Tel: (1) 414.382.2000, Fax: (1) 414.382.4444

Europe/Middle East/Africa: Rockwell Automation NV, Pegasus Park, De Kleetlaan 12a, 1831 Diegem, Belgium, Tel: (32) 2 663 0600, Fax: (32) 2 663 0640

Asia Pacific: Rockwell Automation, Level 14, Core F, Cyberport 3, 100 Cyberport Road, Hong Kong, Tel: (852) 2887 4788, Fax: (852) 2508 1846