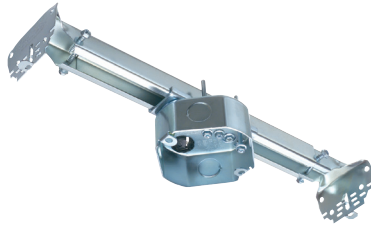


Steel Fan & Fixture Mounting Box with Adjustable Mounting Bracket for New Construction



Ceiling fan/fixture pan boxes mount directly to a joist for a secure installation. Steel box.

FEATURES AND BENEFITS

- No loose parts to misplace
- Heavy-duty plated steel construction eliminates fan wobble
- Versatile 16" to 24" on-center positioning
- Bracket preset for 1/2" ceiling thicknesses
- Works on ceilings up to 1-1/4" thick—fully adjustable! For ceiling material greater than 5/8", convenient indicator marks allow you to bend the bracket at the scoreline matching your ceiling depth for a flush ceiling installation.
- Locator tabs included for installation ease
- Fan/fixture installation screws are parked... ready for easy fan/fixture bracket installation!
- UL rated: 70 lb fan/90 lb fixture at 24" o.c. and 70 lb fan/150 lb fixture at 16" o.c.; CSA rated: 50 lb fan/fixture

FBR423 INCLUDES...

Box/bracket, screws to adjust box position, installed NM cable connector & mud cover, multiple KOs, four installation screws parked-in-place (ready for installer), and two screws for fan/fixture bracket installation (screwed in place until removed by installer).

CATALOG NUMBER	UPC/DCI/NAED MFG #018997	DESCRIPTION / CU. IN.	UNIT PKG	STD PKG	DIM A	DIM B
FBR423	72250	For up to 1-1/4" ceiling thickness 15.6 Cu. In.	1	10	4.250	3.572

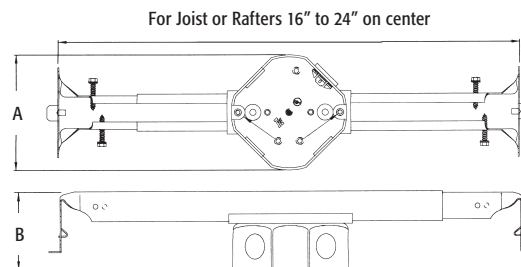
For fan/fixture box dimensions, refer to FBS415 on page R-5. Refer to chart on page R-22 for load ratings and number of single conductors.



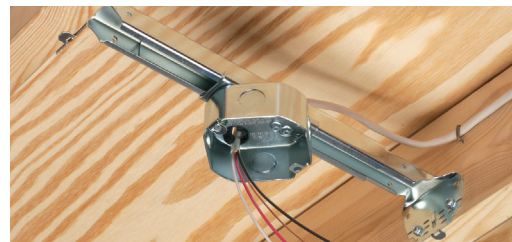
PATENTED.

Note: Install fan or fixture (not included) in accordance with manufacturer's instructions and all local applicable electrical codes, using the parked screws provided.

For a **LOWER COST** option, check out **FBR423** on page R-9



Mounts easily and securely between joists...adjusts from 16" to 24" o.c.



Bend bracket along the score lines for 3/4", 1", or 1-1/4" ceiling depths!



INSTALLATION INSTRUCTIONS for 1/2" Ceilings



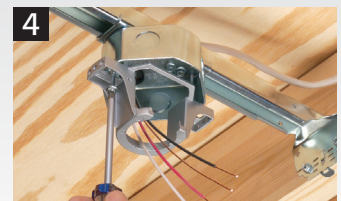
1 Nail "tooth" to joist to temporarily hold bracket in place.



2 Remove parked screws provided on each side of bracket and use them to attach bracket to joists.



3 Use provided box screw to adjust box position from 16" to 24" on-center between joists.



4 Use provided parked fan/fixture installation screws to install fan/fixture mounting bracket. (Installation of drywall not shown.)