



PowerMark Plus^{*} Three Phase Load Centers

The PowerMark Plus^{*} Three Phase load center is designed for use in commercial or high-rise residential units. The galvanized box and tin plated copper stabs ensure the reliability and durability of the load center. The product is available with the main circuit breaker factory installed or the main lugs factory installed.

- 125 A through 225 A main ampere ratings
- Aluminum bus with copper mounting stabs providing copper-to-copper stab connections
- UL Listed (Panelboard No. 67)
 - Service barriers included for factory installed main circuit breaker
- 22 kAIC Symmetrical Short Circuit Rating Standard
- 60°C/75°C Conductor Rating
- Suitable for use as Service Entrance Equipment when installed in accordance the National Electrical Code



PowerMark Plus Three Phase Load Centers

Three Phase, Four Wire, 208Y/120Vac¹
 Main Breaker Factory Installed
 Indoor (NEMA 1) Enclosure

- Combination Flush/Surface Front
- B suffix indicates bottom Feed



TM42422C

Technical Data

Main Ampere Rating	1 Pole, 1" Spaces	2 Pole, 1" Spaces	3 Pole, 1" Spaces	Total 1 Pole Spaces	Product No.	Main Wire Size (AWG/kcmil) Cu-AL	Equipment Ground Kit (Order Separately)	Box #	Drawing #	Feed Type
100	12	6	4	12	TM12410C ²	6-1/0 (Cu), 4-1/0 (Al)	TGK12, TGK24	6	10103091SH17	Top Bottom
	18	8	6	18	TM18410C ²		TGK24, TGK32		10103091SH17	
125	30	14	10	30	TM30412C	1-3/0 (Cu), 2/0-3/0 (Al)	TGK32	11	10103091SH21	Top
	30	14	10	30	TM30412CB				10103091SH21	Bottom
150	24	12	8	24	TM24415C	1-3/0 (Cu), 2/0-3/0 (Al)	TGL1, TGL2, TGL20, TNG3, TGN6	11	10103091SH21	Top
	24	12	8	24	TM24415CB		TGK32		10103091SH21	Bottom
	30	14	10	30	TM30415C			TGK32	10103091SH21	Top
	30	14	10	30	TM30415CB		TGK42		10103091SH21	Bottom
	42	20	14	42	TM42415C			TGK42	10103091SH23	Top
	42	20	14	42	TM42415CB		10103091SH23		Bottom	
200	24	12	8	24	TM24420C	1-3/0 (Cu), 2/0-3/0 (Al)	TGK32	11	10103091SH21	Top
	24	12	8	24	TM24420CB				10103091SH21	Bottom
	30	14	10	30	TM30420C	1-250 (Cu), 2/0-250 (Al)	TGK32	12	10103091SH22	Top
	30	14	10	30	TM30420CB				10103091SH22	Bottom
	42	20	14	42	TM42420C	TGK42	14	10103091SH24	Top	
	42	20	14	42	TM42420CB			10103091SH24	Bottom	
225	42	20	14	42	TM42422C	1-300 (Cu), 2/0-300 (Al)	(2) TGL2	15	10103091SH25	Top
	42	20	14	42	TM42422CB				10103091SH25	Bottom

Three Phase, Four Wire, 208Y/120Vac¹
 Main Breaker Factory Installed
 Outdoor (NEMA 3R) Enclosure



TM42422R

Technical Data

Main Ampere Rating	1 Pole, 1" Spaces	2 Pole, 1" Spaces	3 Pole, 1" Spaces	Total 1 Pole Spaces	Product No.	Main Wire Size (AWG/kcmil) Cu-AL	Equipment Ground Kit (Order Separately)	Box #	Drawing #	Feed Type
100	18	8	6	18	TM18410R	6-1/0 (Cu), 4-1/0 (Al)	TGK24, TGK32	R4	10103091SH2	Top
125	30	14	10	30	TM30412R	1-3/0 (Cu), 2/0-3/0 (Al)	TGK32	R7	10103091SH3	Top
150	24	12	8	24	TM24415R	1-3/0 (Cu), 2/0-3/0 (Al)	TGK32	R6	10103091SH5	Top
	24	14	10	30	TM30415R			R7	10103091SH3	
200	30	14	10	30	TM30420R	1-250 (Cu), 2/0-250 (Al)	TGK32	R7	10103091SH3	Top
	42	20	14	42	TM42420R			TGK42	R8	
225	42	20	14	42	TM42422R	1-300 (Cu), 2/0-300 (Al)	TGK42	R8	10103091SH6	Top

¹Also UL Listed for three phase, four-wire 240/120 Volts Hi Leg delta and three phase, three-wire 240 Volts (240V breakers must be installed).

²100 Amp indoor devices UL listed for bottom feed by installing complete unit upside down.

Three Phase, Four Wire, 208Y/120Vac¹ Main Lugs Factory Installed Indoor (NEMA 1) Enclosure

- Combination Flush/Surface Front



TL18415C



TL42422C

Technical Data

Main Ampere Rating	1 Pole, 1" Spaces	2 Pole, 1" Spaces	3 Pole, 1" Spaces	Total 1 Pole Spaces	Product No.	Main Wire Size (AWG/kcmil) Cu-AL	Equipment Ground Kit (Order Separately)	Box #	Drawing #	Feed Type	
125	12	6	4	12	TL12412C ²	6-2/0	TGK12, TGK24	4	10103091SH16	Top Bottom	
150	18	8	6	18	TL18415C ²	1-3/0 (Cu), 2/0-3/0 (Al)	TGK24, TGK32	7	10103091SH2	Top Bottom	
	24	12	8	24	TL24415C ²				10103091SH18		
200	18	8	6	18	TL18420C ²	1-250 (Cu), 2/0-250 (Al)	TGK32	8	10103091SH2	Top Bottom	
	30	14	10	30	TL30420C ²				11		10103091SH21
	42	20	14	42	TL42420C				13		10103091SH23
225	30	14	10	10	TL30422C ³	1-300 (Cu), 2/0-300 (Al)	(2) TGL2	15	10103091SH25	Top Bottom	
	42	20	14	42	TL42422C ³				10103091SH25		

Three Phase, Four Wire, 208Y/120Vac¹ Main Lugs Factory Installed Outdoor (NEMA 3R) Enclosure



TL18420R



TL42422R

Technical Data

Main Ampere Rating	1 Pole, 1" Spaces	2 Pole, 1" Spaces	3 Pole, 1" Spaces	Total 1 Pole Spaces	Product No.	Main Wire Size (AWG/kcmil) Cu-AL	Equipment Ground Kit (Order Separately)	Box #	Drawing #	Feed Type	
125	12	6	4	12	TL12412R ²	6-2/0	TGK12, TGK24	R3	10103091SH1	Top	
150	18	8	6	18	TL18415R ²	1-3/0 (Cu), 2/0-3/0 (Al)	TGK24, TGK32	R4	10103091SH2	Top	
	24	12	8	24	TL24415R ²				10103091SH2		
200	18	8	6	18	TL18420R ²	1-250 (Cu), 2/0-250 (Al)	TGK32	R4	10103091SH2	Top	
	30	14	10	30	TL30420R ²				R6		10103091SH5
	42	20	14	42	TL42420R ³				R8		10103091SH6
225	42	20	14	42	TL42422R ³	1-300 (Cu), 2/0-300 (Al)	TGK42	R8	10103091SH6	Top	

¹Also UL Listed for three phase, four-wire 240/120 Volts ac delta and three phase, three-wire 240 Volts ac branch breakers installed

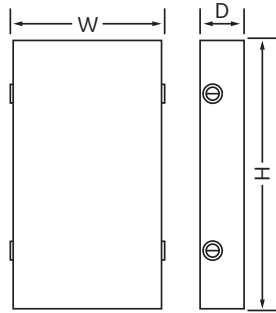
²Alternate main breaker 100 Amp max. THQL (10kAIC), THHQL (22kAIC) three-pole, use retainer THQLRK.

³Not suitable for use as service entrance equipment.

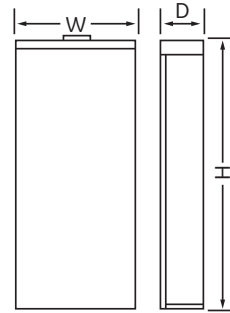
Dimensions and Knockouts

Dimensions (inches)

Box	Width	Height	Depth
4	14	19	3 3/4
6	14	23	3 3/4
7	14	24 11/16	3 3/4
8	14	26 7/16	3 3/4
11	14	33 3/16	3 3/4
12	14	35 7/16	3 3/4
13	14	39 3/16	3 3/4
14	14	43 7/16	3 3/4
15	14	43 7/16	4 5/8
R3	12 1/2	21 3/16	4 5/8
R4	14	33 3/16	4 5/8
R6	14	35 3/17	4 5/8
R7	14	39 3/16	4 5/8
R8	14	43 11/16	5 3/4



Boxes 4, 6, 7, 8, 11, 12, 13, 14, 15



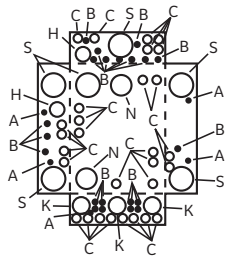
Boxes R3, R4, R6, R7, R8

Indoor Enclosure Knockouts

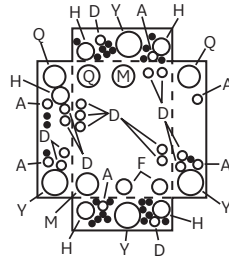
Symbol	A	•	B	C	D	F	H	K	M	N	Q	S	Y
Conduit Size in inches	5/16	-	-	-	-	-	-	-	-	-	-	-	-
	-	3/8	-	3/8	-	3/8	-	-	-	-	-	-	-
	-	1/2	1/2	1/2	1/2	1/2	1/2	-	-	-	-	-	-
	-	-	-	3/4	3/4	3/4	3/4	3/4	-	-	-	-	3/4
	-	-	-	-	-	1	1	1	1	-	1	-	1
	-	-	-	-	-	-	1 1/4	1 1/4	1 1/4	1 1/4	-	1 1/4	1 1/4
	-	-	-	-	-	-	-	1 1/2	1 1/2	1 1/2	1 1/2	1 1/2	1 1/2
	-	-	-	-	-	-	-	-	2	2	2	2	2
	-	-	-	-	-	-	-	-	-	-	2 1/2	2 1/2	2 1/2
	-	-	-	-	-	-	-	-	-	-	-	3	-
	-	-	-	-	-	-	-	-	-	-	-	-	-
	-	-	-	-	-	-	-	-	-	-	-	-	-

Outdoor Enclosure Knockouts

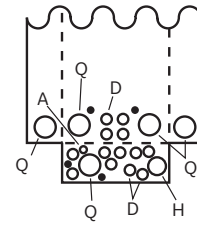
Symbol	A	•	D	H	Q
Conduit Size in inches	9/16	-	-	-	-
	-	3/8	-	-	-
	-	1/2	1/2	1/2	-
	-	-	3/4	3/4	3/4
	-	-	-	1	1
	-	-	-	1 1/4	1 1/4
	-	-	-	-	1 1/2
	-	-	-	-	2
	-	-	-	-	2 1/2
	-	-	-	-	-



Box 15



Boxes 4, 6, 7, 8, 11, 12, 13, 14



Boxes R3, R4, R6, R7, R8