

## DESCRIPTION

Air-Tite™ reflector trim in the 6" trim family for use in recessed downlighting.

Catalog #		Type
Project		
Comments		Date
Prepared by		

## SPECIFICATION FEATURES

Self-flanged socket supporting trim with torsion spring retention. Accepts a wide variety of lamps. Makes installation Air-Tite regardless of housing used. Trim available in white and reflector available in a variety of finishes.

### Lamp Listings - GU24

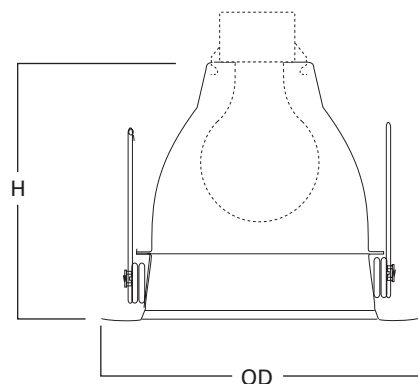
H724ICAT	CF15/R30/GU24
H724ICATL	
H724RICAT	CF13/GU24 (spiral)
H724RICATL	

### Lamp Listings - Incandescent

H7T	75W PAR30, 75W PAR30L, 85W BR30, 100W R30, 100W A19
H7TNB	
H7TCP	
H7RT	50W PAR30, 65W BR30, 75W R30, 75W PAR30L, 150W A21

H7ICAT	60W A19, 65W BR30, 65W PAR38, 75W PAR30, 75W PAR30L, 75W R30, 90W BR40
H7ICT	
H7RICAT	
H7RICT	

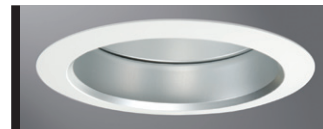
H7ICATNB	60W A19, 65W BR30, 75W R30, 75W PAR30, 75W PAR30L, 65W PAR38, 90W BR40
H7ICTNB	
H7UICAT	75W PAR30, 75W PAR30L, 100W R30, 100W A19, 100W PAR38
H7UICT	



Height: 5" [127mm]  
Outside Diameter: 7-1/4" [184mm]

## ORDERING INFORMATION

Trim	Finish
<input type="text"/>	<input type="text"/>
30 = 6" Air-Tite reflector	HAT = White trim ring with haze reflector RGAT = White trim with gold reflector CAT = White trim with clear specular reflector



**30HAT**  
White Trim, Haze Reflector



**30RGAT**  
White Trim, Gold Reflector



**30CAT**  
White Trim, Clear Specular Reflector

**30**

**6-Inch Super Trim™  
Air-Tite™ Reflector**