

DESCRIPTION

LAZER

The Lazer Two-Conductor track is available in two finishes and 4 lengths. The overall height is only 9/16" and the track has a decorative reveal at the ceiling line. It accepts both Lazer Track lampholders and Halo Power-Trac lampholders. Lazer Track is UL listed and CSA certified.

Catalog #		Type
Project		
Comments		Date
Prepared by		

SPECIFICATION FEATURES

A. Structural: Extruded aluminum .050" [1.3mm] nominal wall thickness

B. Line Conductor: Solid copper bus bars -cross section equivalent to #12 AWG wire.

C. Insulating Liner: Extruded polyvinyl insulator.

D. Neutral Conductor: cross section equivalent of #12 AWG wire.

E. Polarity Indicator: Visual polarity groove indicates proper electrical installation of lampholder adapter.

Construction

The structural channel is extruded aluminum with .050" nominal wall thickness. Conductors are solid copper bus bars encased in rigid extruded PVC insulators. Polarized connectors and end

caps are molded polycarbonate. Electrical capacity is 20 AMPS.

Size

Miniature Trac is only 9/16" (14mm) deep by 1 3/8" (35mm) wide.

Finishes

Miniature Trac is available in two finishes: White (P) and Matte Black, (MB).

Connectors

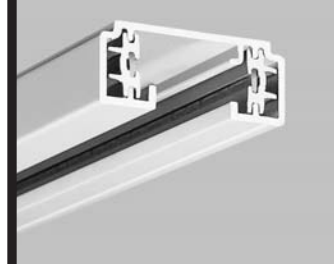
Connectors simply push into the ends of the Trac, eliminating splicing. Straight, right angle, X's, T's and flexible connectors allow track to be assembled in almost any pattern.

Grounding

Grounding is accomplished through a grounding channel in the track. The track maintains continuity to the building's grounding system through the ground contact fingers in each of the connectors.

Polarity

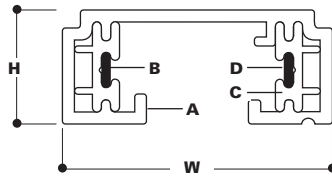
A visual polarity line on Lazer Track indicates proper electrical installation. Simply line up polarity on Lazer Track and lampholder adapter. .



**LZR102, LZR104
LZR106, LZR108**

**MINIATURE
SINGLE CIRCUIT
TRAC SYSTEM**

Lazer-Trac



ORDERING INFORMATION

SAMPLE NUMBER: LZR108P

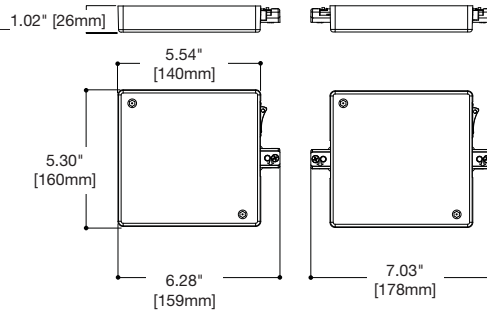
Track	Finishes	Accessories	Connectors																																
<table border="1"> <tr> <td>LZR102</td> <td>LZR106</td> </tr> <tr> <td>LZR104</td> <td>LZR108</td> </tr> </table>	LZR102	LZR106	LZR104	LZR108	<table border="1"> <tr> <td>P=Satin White</td> </tr> <tr> <td>MB=Matte Black</td> </tr> </table>	P=Satin White	MB=Matte Black	(See Below)	<table border="1"> <tr> <td>LZR200</td> <td>Live End Feed with Junction Box Cover</td> </tr> <tr> <td>LZR201</td> <td>Live End Feed</td> </tr> <tr> <td>LZR202</td> <td>Floating Canopy and Connector</td> </tr> <tr> <td>LZR203</td> <td>Adjustable L and Straight Connector</td> </tr> <tr> <td>LZR204</td> <td>Conduit Adapter Feed</td> </tr> <tr> <td>LZR205</td> <td>Conduit Continuation Feed</td> </tr> <tr> <td>LZR206</td> <td>T-Bar Canopy</td> </tr> <tr> <td>LZR208</td> <td>Cord and Plug Feed</td> </tr> <tr> <td>LZR211</td> <td>Flexible Connector Feed</td> </tr> <tr> <td>LZR212</td> <td>Mini Joiner</td> </tr> <tr> <td>LZR213R</td> <td>"T" Connector - Right</td> </tr> <tr> <td>LZR213L</td> <td>"T" Connector - Left</td> </tr> <tr> <td>LZR214</td> <td>"X" Connector</td> </tr> </table>	LZR200	Live End Feed with Junction Box Cover	LZR201	Live End Feed	LZR202	Floating Canopy and Connector	LZR203	Adjustable L and Straight Connector	LZR204	Conduit Adapter Feed	LZR205	Conduit Continuation Feed	LZR206	T-Bar Canopy	LZR208	Cord and Plug Feed	LZR211	Flexible Connector Feed	LZR212	Mini Joiner	LZR213R	"T" Connector - Right	LZR213L	"T" Connector - Left	LZR214	"X" Connector
LZR102	LZR106																																		
LZR104	LZR108																																		
P=Satin White																																			
MB=Matte Black																																			
LZR200	Live End Feed with Junction Box Cover																																		
LZR201	Live End Feed																																		
LZR202	Floating Canopy and Connector																																		
LZR203	Adjustable L and Straight Connector																																		
LZR204	Conduit Adapter Feed																																		
LZR205	Conduit Continuation Feed																																		
LZR206	T-Bar Canopy																																		
LZR208	Cord and Plug Feed																																		
LZR211	Flexible Connector Feed																																		
LZR212	Mini Joiner																																		
LZR213R	"T" Connector - Right																																		
LZR213L	"T" Connector - Left																																		
LZR214	"X" Connector																																		
<table border="1"> <tr> <td>LZR102</td> <td>LZR104</td> <td>LZR106</td> <td>LZR108</td> </tr> <tr> <td>L = 2' nominal</td> <td>L = 4' nominal</td> <td>L = 6' nominal</td> <td>L = 8' nominal</td> </tr> <tr> <td>Actual length: 20-1/8" [511mm]</td> <td>Actual length: 44-1/8" [1121mm]</td> <td>Actual length: 68-1/8" [1730mm]</td> <td>Actual length: 98-1/8" [2492mm]</td> </tr> <tr> <td>W=1-3/8" [35mm]</td> <td>W=1-3/8" [35mm]</td> <td>W=1-3/8" [35mm]</td> <td>W=1 3/8" [35mm]</td> </tr> <tr> <td>H =9/16" [14mm]</td> <td>H =9/16" [14mm]</td> <td>H =9/16" [14mm]</td> <td>H =9/16" [14mm]</td> </tr> </table>	LZR102	LZR104	LZR106	LZR108	L = 2' nominal	L = 4' nominal	L = 6' nominal	L = 8' nominal	Actual length: 20-1/8" [511mm]	Actual length: 44-1/8" [1121mm]	Actual length: 68-1/8" [1730mm]	Actual length: 98-1/8" [2492mm]	W=1-3/8" [35mm]	W=1-3/8" [35mm]	W=1-3/8" [35mm]	W=1 3/8" [35mm]	H =9/16" [14mm]	H =9/16" [14mm]	H =9/16" [14mm]	H =9/16" [14mm]	<table border="1"> <tr> <td>Finish Codes</td> <td>Finish Codes</td> <td>Finish Codes</td> <td>Finish Codes</td> </tr> <tr> <td>P, MB</td> <td>P, MB</td> <td>P, MB</td> <td>P, MB</td> </tr> </table>	Finish Codes	Finish Codes	Finish Codes	Finish Codes	P, MB	P, MB	P, MB	P, MB	<table border="1"> <tr> <td>Accessories</td> </tr> <tr> <td>LZR207 T-Bar Mounting Clip</td> </tr> <tr> <td>LZR209 Monopoint Feed</td> </tr> <tr> <td>LZR210 Monopoint Feed—Low Voltage</td> </tr> </table>	Accessories	LZR207 T-Bar Mounting Clip	LZR209 Monopoint Feed	LZR210 Monopoint Feed—Low Voltage	
LZR102	LZR104	LZR106	LZR108																																
L = 2' nominal	L = 4' nominal	L = 6' nominal	L = 8' nominal																																
Actual length: 20-1/8" [511mm]	Actual length: 44-1/8" [1121mm]	Actual length: 68-1/8" [1730mm]	Actual length: 98-1/8" [2492mm]																																
W=1-3/8" [35mm]	W=1-3/8" [35mm]	W=1-3/8" [35mm]	W=1 3/8" [35mm]																																
H =9/16" [14mm]	H =9/16" [14mm]	H =9/16" [14mm]	H =9/16" [14mm]																																
Finish Codes	Finish Codes	Finish Codes	Finish Codes																																
P, MB	P, MB	P, MB	P, MB																																
Accessories																																			
LZR207 T-Bar Mounting Clip																																			
LZR209 Monopoint Feed																																			
LZR210 Monopoint Feed—Low Voltage																																			
<p>Current Limiter - End Feed</p> <p>LZRC201CB120=120W (1A @120V) LZRC201CB300=300W (2.5A @120V) LZRC201CB600=600W (5A @120V) LZRC201CB960=960W (8A @120V) LZRC201CB1200=1200W (10A @120V)</p> <p>Current Limiter - Center Feed</p> <p>LZRC203CB120=120W (1A @120V) LZRC203CB300=300W (2.5A @120V) LZRC203CB600=600W (5A @120V) LZRC203CB960=960W (8A @120V) LZRC203CB1200=1200W (10A @120V)</p> <p>Finishes</p> <p>P White MB Black</p>																																			

ADV082386

Supersedes ADV042022,
ADV012290 and ADV990388
11/08

LZRC201, LZRC203
Current Limiter - End and Center Feeds

End-feed and Center-feed capable:
Five breaker sizes are available. Consult factory if other sizes are required. Can be utilized on hard or grid ceilings. Can be used with pendant suspended track. Breaker can be used as an on-off switch. Breaker features a "tripped" condition indicator.
cULus Listed



LZRC201
LZRC203

Feed Type	Circuit Breaker	Finish
LZRC201 = Lazer 1-Circuit End Feed	CB120 = 120W (1A @ 120V) CB300 = 300W (2.5A @ 120V) CB600 = 600W (5A @ 120V) CB960 = 960W (8A @ 120V) CB1200 = 1200W (10A @ 120V)	P = White MB = Black
LZRC203 = Lazer 1-Circuit Center Feed		

Sample catalog number: LZRC201CB120P
(Field assembly of feed and circuit breaker required)

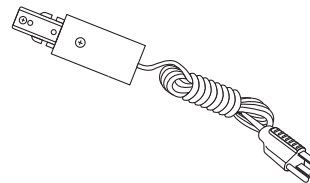
Consult factory for Single Circuit Center-feed requiring two circuit breakers

Connectors specifically for Lazer-by-Halo Track sections. Use for forming almost any configuration of track layouts.

LZR208 Cord and Plug Feed

10' three-wire cord with grounded plug. Maximum capacity 5 AMPS.

Finish Codes: P, MB



LZR208

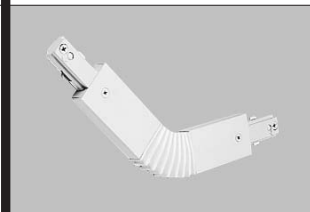
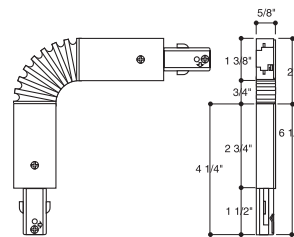
ORDERING INFORMATION

Connector	Finish
LZR208	

LZR211 Flexible Connector Feed

To connect two track sections at any angle up to 90° or for connecting wall and ceiling mounted track. Can be used as electrical feed point.

Finish Codes: P, MB



LZR211

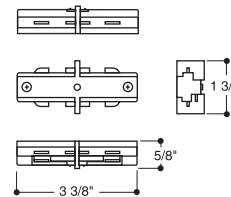
ORDERING INFORMATION

Connector	Finish
LZR211	

LZR212 Mini Connector

For joining two track sections end-to-end. LZR212 is not an electrical feed.

Finish Codes: P, MB



LZR212

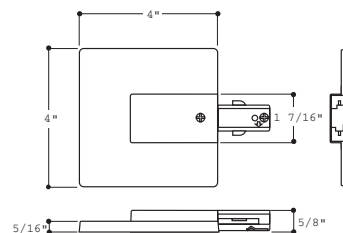
ORDERING INFORMATION

Connector	Finish
LZR212	

LZR200 Live End Feed with Junction Box Cover

For starting a track run at beginning of track and when connector is mounted to a junction box.

Finish Codes: P, MB



LZR200

ORDERING INFORMATION

Connector	Finish
LZR200	

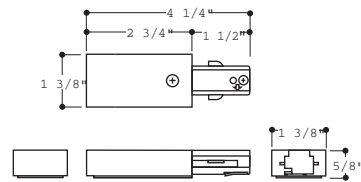
LZR201 Live End Feed

For starting a track run at beginning of track.

Finish Codes: P, MB

ORDERING INFORMATION

Connector	Finish
LZR201	



LZR201

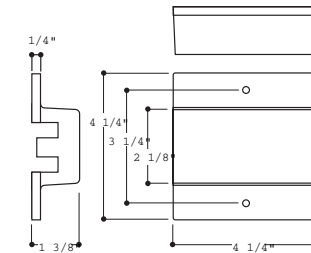
LZR202 Floating Canopy and Connector Feed

Track can be connected to existing outlet box located anywhere along the track. Comes with canopy cover, connector, dead end and mounting hardware.

Finish Codes: P, MB

ORDERING INFORMATION

Connector	Finish
LZR202	



LZR202

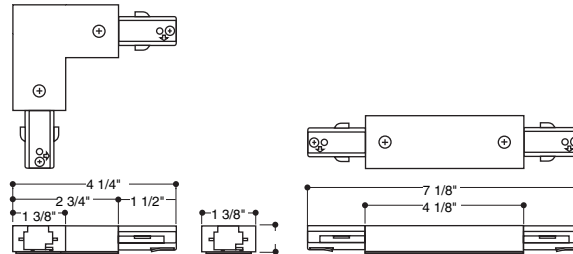
LZR203 Adjustable "L" and Straight Connector Feed

To connect two track sections at right angles or straight end-to-end. Includes straight and right angle covers. Can be used as an electrical feed.

Finish Codes: P, MB

ORDERING INFORMATION

Connector	Finish
LZR203	



LZR203

LZR213R "T" Connector (Right)

LZR213L "T" Connector (Left)

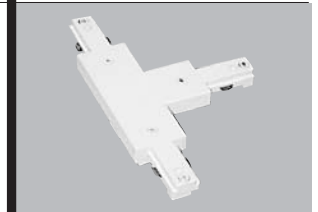
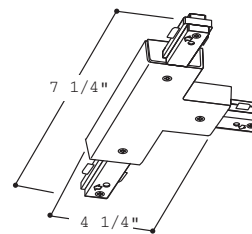
Use for joining three track sections. Select Right(R) or Left (L) Handed versions to maintain proper polarity. May be used as an electrical feed point.

Finish Codes: P, MB

ORDERING INFORMATION

Connector	Finish
LZR213R	

LZR213L	
----------------	--



LZR213

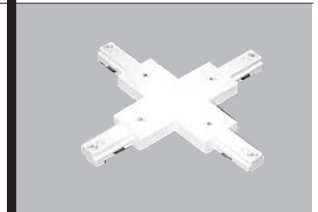
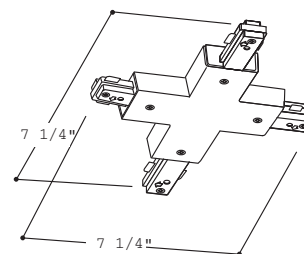
LZR214 "X" Connector

Use for joining four track sections. May be used as an electrical feed point.

Finish Codes: P, MB

ORDERING INFORMATION

Connector	Finish
LZR214	



LZR214

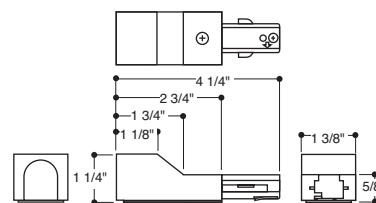
LZR204 Conduit Adapter Feed

Designed to accept 1/2" trade size conduit fitting (not supplied). Use when feeding to track through surface conduit system.

Finish Codes: P, MB

ORDERING INFORMATION

Connector	Finish
LZR204	



LZR204

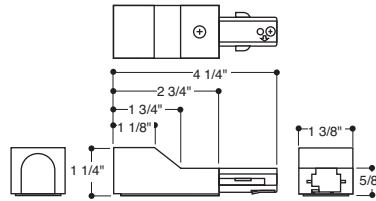
LZR205 Conduit Continuation Feed

Includes one left feed and one right feed to continue a run around obstructions. Requires 1/2" trade size fitting (not included).

Finish Codes: P, MB

ORDERING INFORMATION

Connector	Finish
LZR205	



LZR205

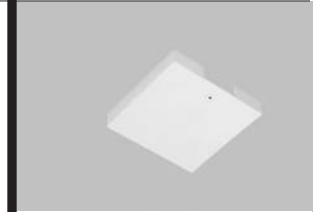
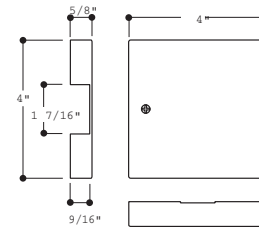
LZR206 T-Bar Canopy Feed

For installing track on T-Bar ceilings. LZR201 or LZR203 also required.

Finish Codes: P

ORDERING INFORMATION

Connector	Finish
LZR206	



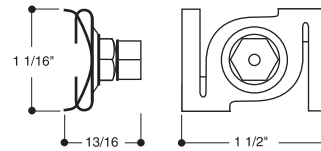
LZR206

LZR207 T-Bar Mounting Clip

For installing track to a suspended ceiling. Kit contains 3 clips for mounting 2', 4', 6', or 8' track. Order one kit for each track section. Compatible with Halo and Lazer track.

ORDERING INFORMATION

Connector	Finish
LZR207	



LZR207

Lazer monopoints allow the installation of a single lampholder without using a complete track installation

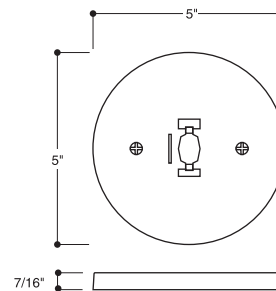
LZR209 Monopoint Feed

For installing one Halo or Lazer track lampholder. Mounts directly to junction box. 500 watt maximum. Not compatible with Halo or Lazer low voltage lampholders with integral solid state power supplies.

Finish Codes: P, MB

ORDERING INFORMATION

Connector	Finish
LZR209	



LZR209

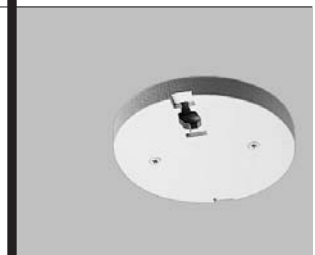
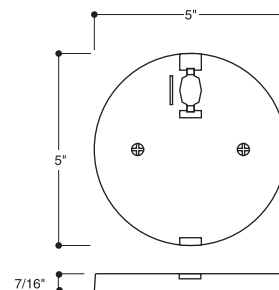
LZR210 Monopoint Feed - Low Voltage

For installing one Halo or Lazer low voltage lampholder. Mounts directly to junction box. 500 watt maximum.

Finish Codes: P, MB

ORDERING INFORMATION

Connector	Finish
LZR210	



LZR210