

BALDOR® • ***RELIANCE***

Product Information Packet

CSSWDM3542

.75HP,1745RPM,3PH,60HZ,56C,3519M,TENV,F1

Part Detail							
Revision:	N	Status:	PRD/A	Change #:		Proprietary:	No
Type:	AC	Prod. Type:	3519M	Elec. Spec:	35WGP559	CD Diagram:	CD0005
Enclosure:	TENV	Mfg Plant:		Mech. Spec:	35V814	Layout:	35LYV814
Frame:	56C	Mounting:	F1	Poles:	04	Created Date:	04-23-2007
Base:	RG	Rotation:	R	Insulation:	F	Eff. Date:	04-02-2015
Leads:	9#18					Replaced By:	
Literature:		Elec. Diagram:					

Nameplate NP1951A01							
CAT.NO.	CSSWDM3542						
SPEC.	35V814P559						
HP	.75						
VOLTS	208-230/460						
AMP	2.36-2.16/1.08						
RPM	1740						
FRAME	56C	HZ	60	PH	3		
SER.F.	1.25	CODE	M	DES	B	CLASS	F
NEMA-NOM-EFF	82.5	PF	78				
RATING	40C AMB-CONT						
CC		USABLE AT 208V					
DE	6205	ODE	6203				
ENCL	TENV	SN					
	SFA 2.8-2.54/1.27						

AC Induction Motor Performance Data

Record # 26877 - Typical performance - not guaranteed values

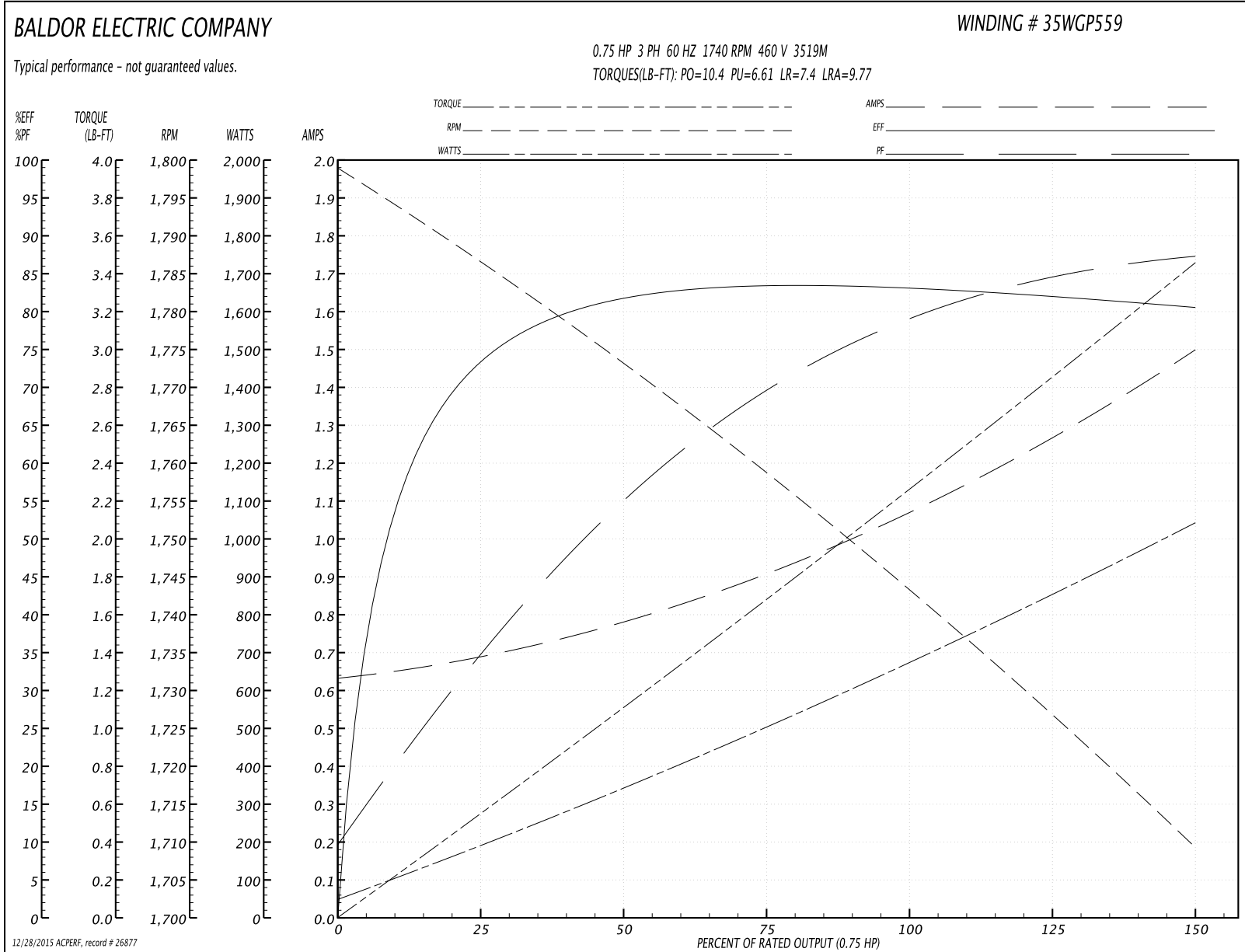
Winding: 35WGP559-R001	Type: 3519M	Enclosure: TENV
-------------------------------	--------------------	------------------------

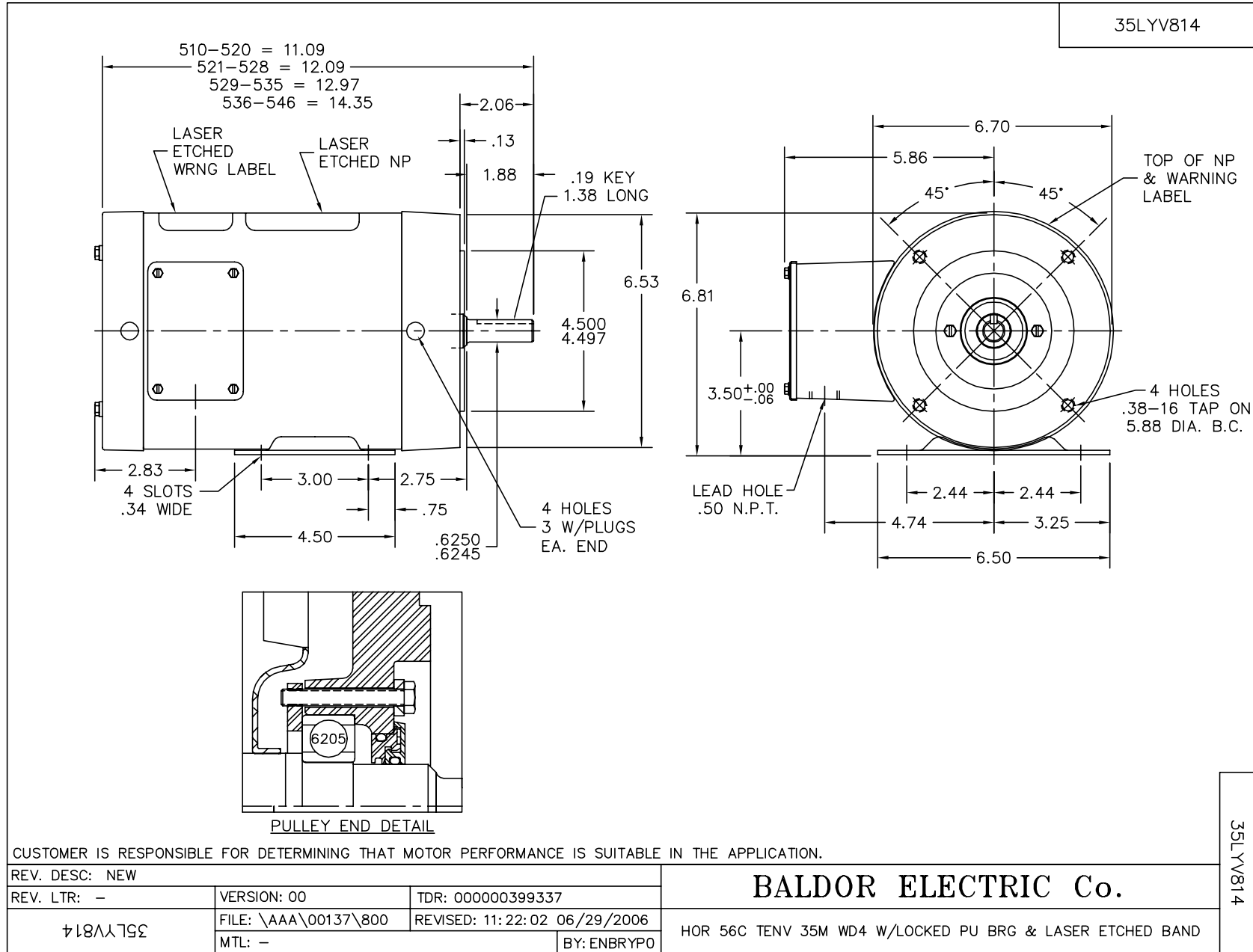
Nameplate Data				460 V, 60 Hz: High Voltage Connection	
Rated Output (HP)	.75			Full Load Torque	2.27 LB-FT
Volts	208-230/460			Start Configuration	direct on line
Full Load Amps	2.36-2.16/1.08			Breakdown Torque	10.4 LB-FT
R.P.M.	1740			Pull-up Torque	6.61 LB-FT
Hz	60	Phase	3	Locked-rotor Torque	7.4 LB-FT
NEMA Design Code	B	KVA Code	M	Starting Current	9.77 A
Service Factor (S.F.)	1.25			No-load Current	0.64 A
NEMA Nom. Eff.	82.5	Power Factor	78	Line-line Res. @ 25°C	23.5 Ω
Rating - Duty	40C AMB-CONT			Temp. Rise @ Rated Load	77°C
S.F. Amps	2.8-2.54/1.27			Temp. Rise @ S.F. Load	103°C

Load Characteristics 460 V, 60 Hz, 0.75 HP

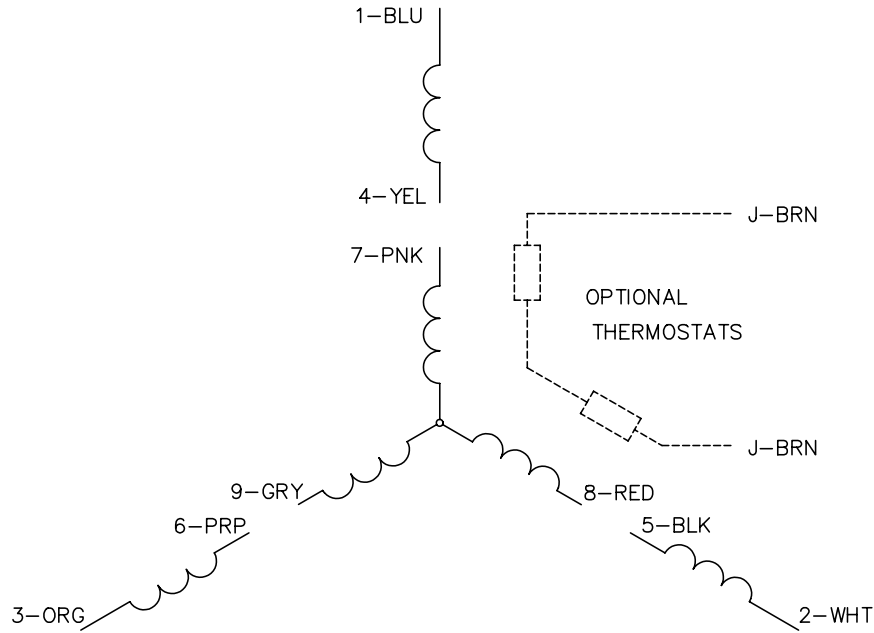
% of Rated Load	25	50	75	100	125	150	S.F.
Power Factor	35	56	70	78	84	88	84
Efficiency	73	81.9	83.8	83.5	82.5	80.6	82.5
Speed	1787	1773	1758	1743	1728	1709	1728
Line amperes	0.679	0.776	0.909	1.08	1.27	1.49	1.27

Performance Graph at 460V, 60Hz, 0.75HP Typical performance - Not guaranteed values

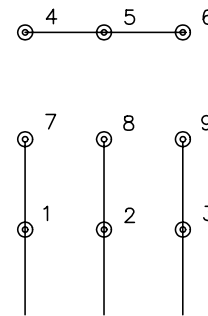




CD0005

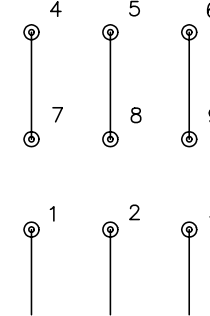


LOW VOLTAGE
(2Y)



LINE

HIGH VOLTAGE
(1Y)



LINE

NOTES:

1. INTERCHANGE ANY TWO LINE LEADS TO REVERSE ROTATION.
2. OPTIONAL THERMOSTATS ARE PROVIDED WHEN SPECIFIED.
3. ACTUAL NUMBER OF INTERNAL PARALLEL CIRCUITS MAY BE A MULTIPLE OF THOSE SHOWN ABOVE.
4. LEAD COLORS ARE OPTIONAL. LEADS MUST ALWAYS BE NUMBERED AS SHOWN.

REV. DESC: REVISE TO SHOW OPTIONAL COLORS			
REV. LTR: E	BY: JLP	REVISED: 01/19/99 10:15	TDR: 0171435
9000D		FILE: AAA00005140	MDL: -
		MTL: -	

BALDOR ELECTRIC Co.

3PH, DV, 9 LEADS

CD0005