

BALDOR® • ***RELIANCE***

Product Information Packet

JM3120

1.5HP,3450RPM,3PH,60HZ,56J,3424M,OPEN,F1

Part Detail							
Revision:	G	Status:	PRD/A	Change #:		Proprietary:	No
Type:	AC	Prod. Type:	3424M	Elec. Spec:	34WGY691	CD Diagram:	CD0005
Enclosure:	OPEN	Mfg Plant:		Mech. Spec:	34J770	Layout:	34LYJ770
Frame:	56J	Mounting:	F1	Poles:	02	Created Date:	
Base:	N	Rotation:	R	Insulation:	B	Eff. Date:	06-14-2011
Leads:	9#18					Replaced By:	
Literature:		Elec. Diagram:					

Nameplate NP1256L							
CAT.NO.	JM3120						
SPEC.	34J770Y691						
HP	1.5						
VOLTS	230/460						
AMP	4.4/2.2						
RPM	3450						
FRAME	56J	HZ	60	PH	3		
SER.F.	1.30	CODE	L	DES	B	CLASS	B
NEMA-NOM-EFF	74	PF	86				
RATING	40C AMB-CONT						
CC		USABLE AT 208V	5.5				
DE	6203	ODE	6203				
ENCL	OPEN	SN					
	SFA 5/2.5						

AC Induction Motor Performance Data
Record # 8002 - Typical performance - not guaranteed values

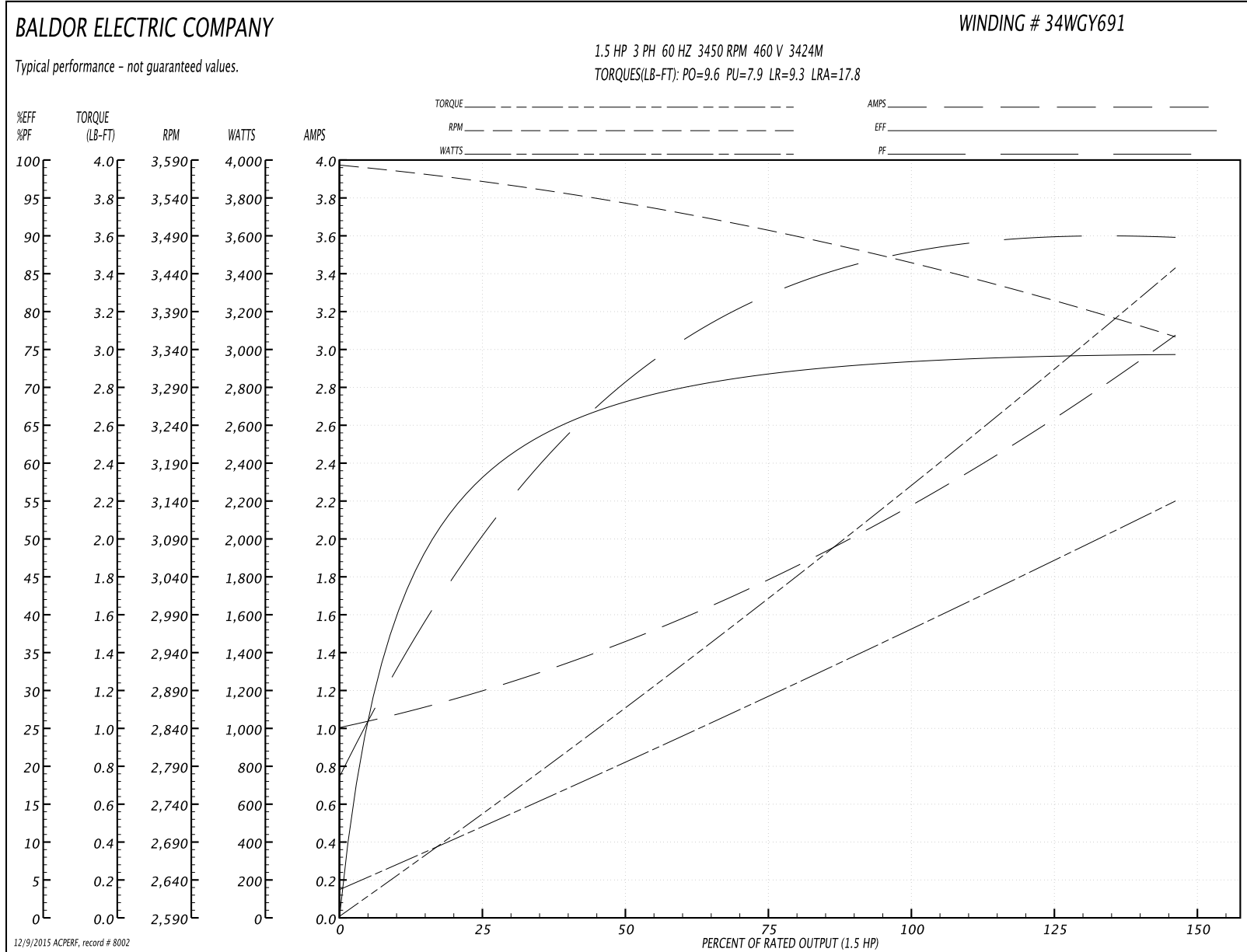
Winding: 34WGY691-R001	Type: 3424M	Enclosure: OPEN
-------------------------------	--------------------	------------------------

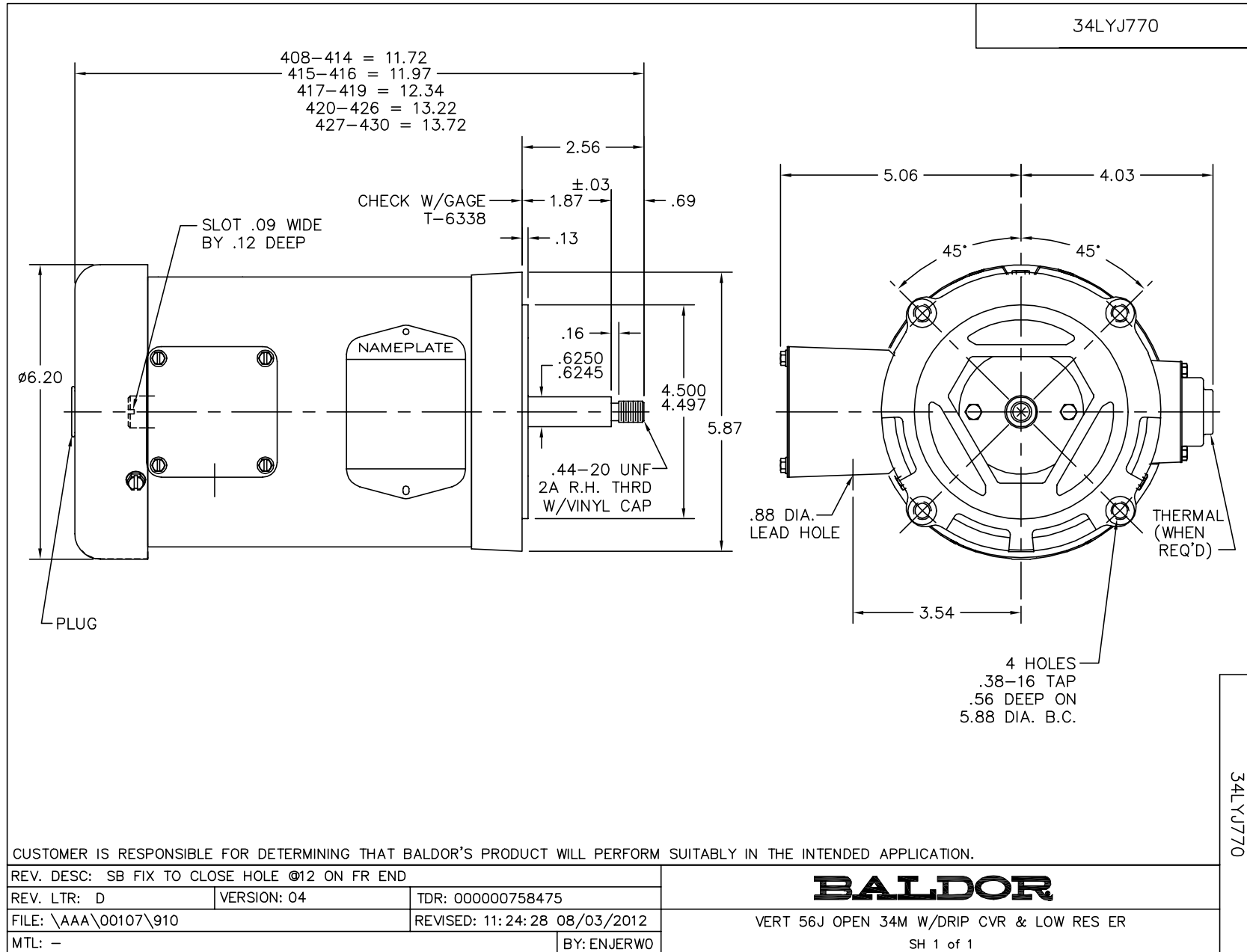
Nameplate Data				460 V, 60 Hz: High Voltage Connection	
Rated Output (HP)	1.5			Full Load Torque	2.3 LB-FT
Volts	230/460			Start Configuration	direct on line
Full Load Amps	4.4/2.2			Breakdown Torque	9.6 LB-FT
R.P.M.	3450			Pull-up Torque	7.9 LB-FT
Hz	60	Phase	3	Locked-rotor Torque	9.3 LB-FT
NEMA Design Code	B	KVA Code	L	Starting Current	17.8 A
Service Factor (S.F.)	1.3			No-load Current	1 A
NEMA Nom. Eff.	74	Power Factor	86	Line-line Res. @ 25°C	9.5 Ω
Rating - Duty	40C AMB-CONT			Temp. Rise @ Rated Load	45°C
S.F. Amps	5.4/2.7			Temp. Rise @ S.F. Load	59°C
				Rotor inertia	0.0223 LB-FT ²

Load Characteristics 460 V, 60 Hz, 1.5 HP

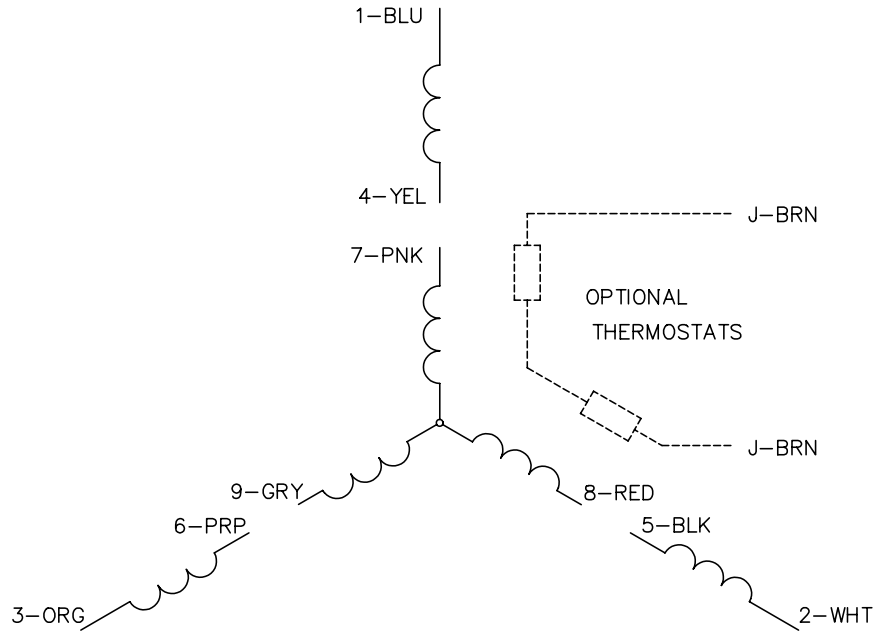
% of Rated Load	25	50	75	100	125	150	S.F.
Power Factor	56	70	79	86	90	88	91
Efficiency	53.7	67.6	73.4	74.2	74	74	74
Speed	3555	3523	3490	3456	3431	3338	3426
Line amperes	1.2	1.5	1.8	2.2	2.6	3.1	2.7

Performance Graph at 460V, 60Hz, 1.5HP Typical performance - Not guaranteed values

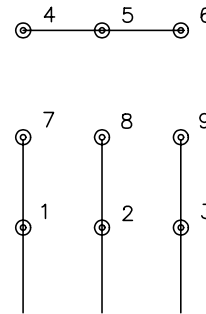




CD0005

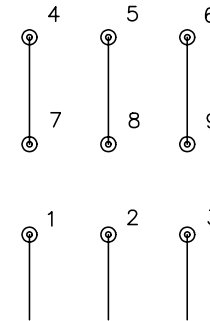


LOW VOLTAGE
(2Y)



LINE

HIGH VOLTAGE
(1Y)



LINE

NOTES:

1. INTERCHANGE ANY TWO LINE LEADS TO REVERSE ROTATION.
2. OPTIONAL THERMOSTATS ARE PROVIDED WHEN SPECIFIED.
3. ACTUAL NUMBER OF INTERNAL PARALLEL CIRCUITS MAY BE A MULTIPLE OF THOSE SHOWN ABOVE.
4. LEAD COLORS ARE OPTIONAL. LEADS MUST ALWAYS BE NUMBERED AS SHOWN.

REV. DESC: REVISE TO SHOW OPTIONAL COLORS			
REV. LTR: E	BY: JLP	REVISED: 01/19/99 10:15	TDR: 0171435
90000		FILE: AAA00005140	MDL: -
		MTL: -	

BALDOR ELECTRIC Co.

3PH, DV, 9 LEADS

CD0005