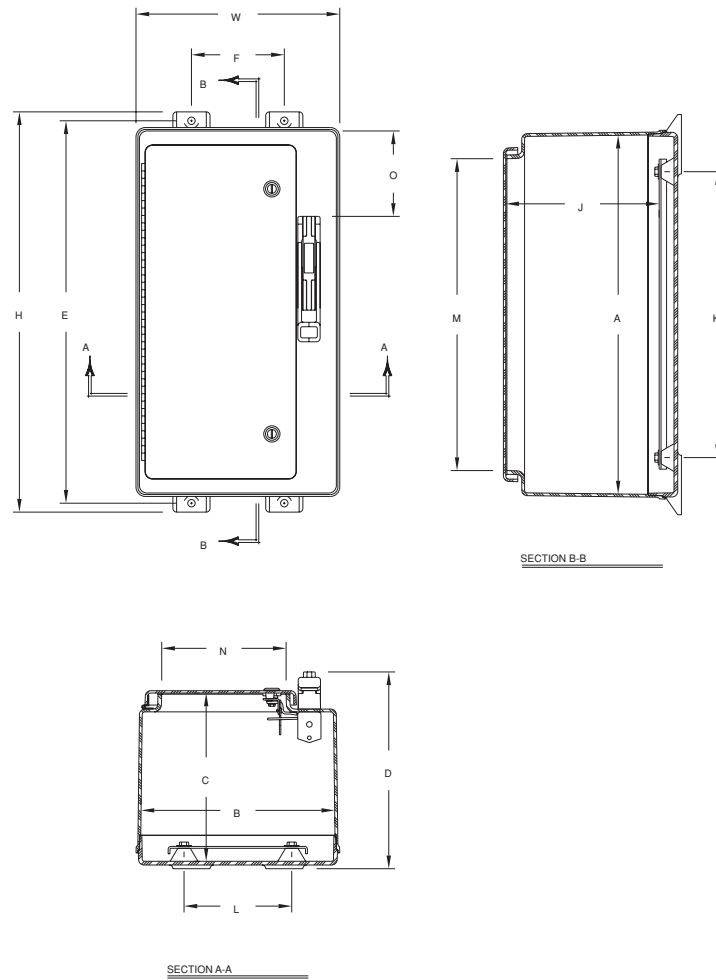


Control Disconnect Enclosures Technical Drawings



Control Disconnect Enclosures

SIZE ID NUMBER	OVERALL H X W X D	INSIDE A X B X C	MOUNTING E X F	J	K	L	OPENING ENCLOSURE M X N	O	SHIPPING WEIGHT	PANEL NUMBER
C2016*	22.75 x 16.87 x 11.00 (578 x 429 x 279)	19.70 x 16.04 x 9.24 (500 x 407 x 235)	21.50 x 10.12 (546 x 257)	8.26 (210)	15.25 (387)	11.25 (286)	16.75 x 12.19 (425 x 310)	3.50 (89)	23.5	BP2016CD**
C2412*	26.95 x 13.72 x 13.25 (685 x 348 x 337)	24.00 x 12.87 x 11.33 (610 x 327 x 288)	25.75 x 6.25 (654 x 159)	10.33 (262)	19.25 (489)	7.25 (184)	21.00 x 8.37 (533 x 213)	5.75 (146)	28.6	BP2412CD**
C2424*	27.00 x 25.24 x 13.19 (686 x 641 x 335)	24.05 x 24.39 x 11.25 (611 x 619 x 286)	25.75 x 17.87 (654 x 454)	10.25 (260)	19.25 (489)	19.25 (489)	21.25 x 20.00 (540 x 508)	5.75 (146)	42.7	BP2424CD**
C3024*	33.41 x 26.32 x 13.19 (849 x 668 x 335)	30.46 x 25.47 x 11.27 (774 x 647 x 286)	32.25 x 18.50 (819 x 470)	10.27 (261)	25.25 (641)	19.25 (489)	27.38 x 21.25 (695 x 540)	12.25 (311)	53.6	BP3024CD**
C3630*	39.31 x 32.50 x 13.31 (999 x 826 x 338)	36.31 x 31.69 x 11.36 (922 x 805 x 289)	38.13 x 23.88 (968 x 606)	10.36 (263)	31.25 (794)	25.25 (641)	33.25 x 27.5 (845 x 692)	12.25 (311)	71.5	BP3630CD**

All measures are in inches, items in parentheses are in millimeters.

*Disconnect, fuse block, breaker, yoke, switches, or other internal components are not furnished with enclosure.

**Panel ordered separately.