

Conduit Outlet Bodies

For Rigid Conduit & IMC

Type OE

Use:

To provide access for pulling conductors, and change in direction in conduit runs. Compact design allows use in areas with limited space. Provide future access for maintenance and wiring changes.

Features:

- Compact design
- Precision ground flange
- Blind drilled and tapped screw holes
- Smooth integral hub bushings
- Threaded (NPT) for rigid conduit or IMC
- Five different hub configurations

Material/Finish:

Gray Iron/Zinc Electroplated with aluminum enamel

Third Party Certification:



UL Listed: E-30513
Class I, Div. 1, 2, Groups C, D
Class I, Zone 1, 2, Groups IIA, IIB
Class II, Div. 1, 2, Groups E, F, G
Class III



CSA Certified: 009795

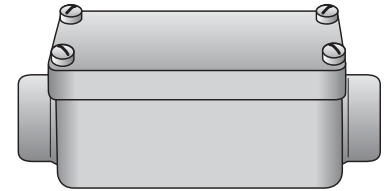
Applicable Third Party Standards:

UL Standard: 886
CSA Standard: C22.2 No.30
NEC Articles 500-503 & 505
Mil. Spec: Mil-F-28675
Fed. Spec: A-A-50563

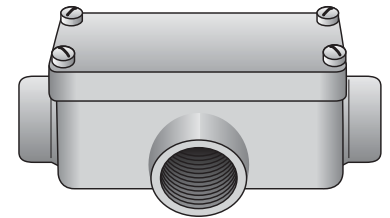
Dimensional Data:

See Page BA33

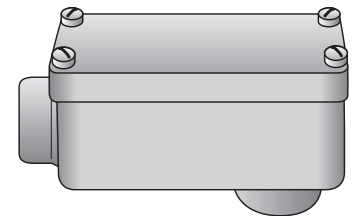
Hub Size	Catalog Number
½ ¾	OEC-50 OEC-75
½ ¾	OET-50 OET-75
½ ¾	OELB-50 OELB-75
½ ¾	OELL-50 OELL-75
½ ¾	OELR-50 OELR-75



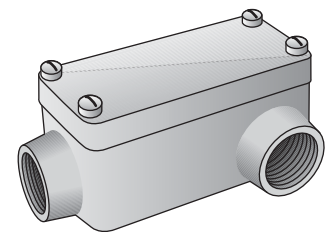
Type OEC



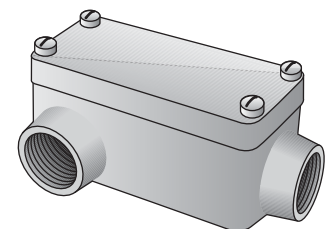
Type OET



Type OELB



Type OELL



Type OELR