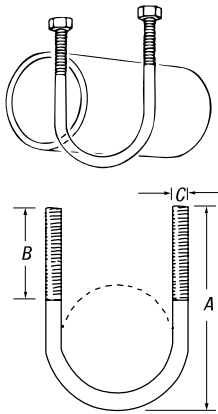


Hardware and Threaded Components

H115 U-Bolts



"U" bolt to support, anchor or guide pipe lines. Sizes through 4" are furnished with one hex nut per leg in Galv-Krom®. H-286 sizes 5" and above are furnished with two hex nuts per leg in black.

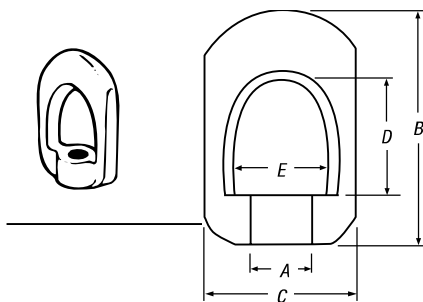


CAT. NO. AND PIPE SIZE	REC. MAX. LOAD (LBS.)	DIMENSIONS (IN.)			WT. IN LBS./C
		A	B	C	
H115 1/2	1,500	2¾	1¾	¾	13
H115 3/4	2,000	3⅞	1¾	¾	15
H115 1	2,500	3⅞	1¾	¾	16
H115 1 1/4	2,500	3½	1¾	¾	17
H115 1 1/2	2,500	3¾	1¾	¾	18
H115 2	3,300	4⅞	2⅞	¾	32
H115 2 1/2	4,000	5½	2⅞	¾	34
H115 3	4,000	5⅞	2	¾	38
H115 3 1/2	4,000	6⅞	2	¾	40
H115 4	4,000	6⅞	2¼	¾	46
H115 5	4,000	8⅞	2¼	½	128
H115 6	4,000	9¾	2¾	¾	239
H115 8	4,000	11¾	2¾	¾	283

Complies with Fed. Spec. WW-H-171E and MSS SP-69 Type 24.

H-272 Swivel Eye

- H-272 swivel eye has ¾" or ½" tapped hole for hanger rod applications

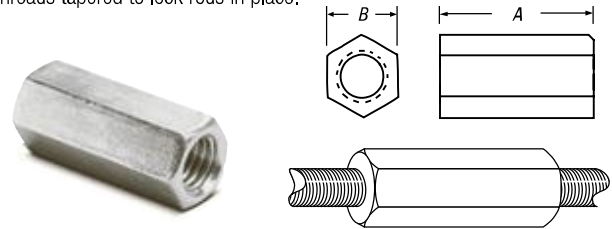


CAT. NO.	DIMENSIONS (IN.)					LOAD RATING (LBS.)	WT. LBS./C
	A	B	C	D	E		
H-272 3/8	¾-16	2¾	1½	1⅞	⅞	2,000	19
H-272 1/2	½-13	2¾	1½	1⅞	⅞	2,000	19

Safety factor of 3.

H119 Steel Rod Coupling

For coupling lengths of H-193 hanger rod. Right-hand threaded. Threads tapered to lock rods in place.

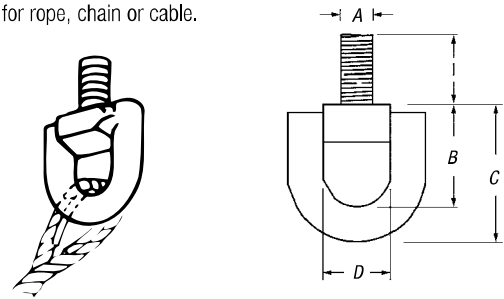


CAT. NO.	THREADS	DIMENSIONS (IN.)		LOAD RATING (LBS.)	WT. LBS./C
		A	B		
H119 1/4	¼-20	⅞	¾	240	2
H119 3/8	⅜-16	1½	½	610	4
H119 1/2	½-13	1¾	¾	1,130	5
H119 5/8	⅝-11	1⅞	⅞	1,810	10

Galv-Krom® finish.

E120, E130 Eyelet with ½" or ⅜" Stud

For bolting to a supporting member to furnish suspension for rope, chain or cable.



CAT. NO.	DIMENSIONS (IN.)				LOAD RATING (LBS.)	WT. LBS./C
	A	B	C	D		
E120 3/8	¾-16	1¾	1¾	½	1,000	23
E130 1/2	½-13	1½	2	¾	1,800	28

Safety factor of 3.

Galv-Krom® finish.

H-120 Saddle-Type Washer

- For rigid attachment of rod to channel
- For use with either ¾" or ½" hanger rod



CAT. NO.	WT. LBS./C
H-120	7

Standard finish: Galv-Krom® unless otherwise specified.