

TYPE PDA PDC

Features

- Modular design
- Easy to assemble
- UL Recognized 90° C 600 Volts and is CSA Certified
- Electro-tin plated
- Lexan® insulating base
- Manufactured from high strength 6061-T6 aluminum alloy

Benefits

- Simplifies stocking. Combines any number of blocks with multiple conductor ranges into the specific configuration required for the job.
- Unique locking feature allows individual blocks to be combined quickly without special tools
- Ensures reliability
- Provides low contact resistance
- Provides a high degree of impact resistance with superior insulating qualities
- Suitable for use with either copper or aluminum conductors



Fig. 1



Fig. 2



Fig. 3



Fig. 4

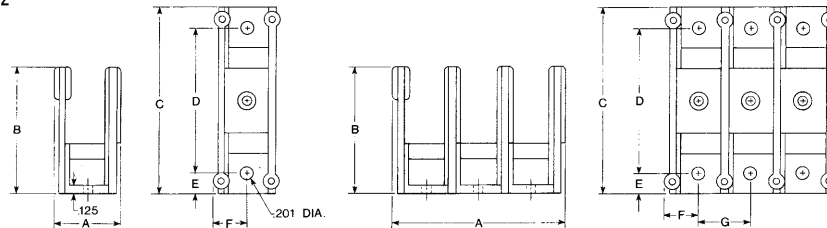
Catalog Number	Figure Number	Connector		Primary		Secondary		Ampere Rating Per Pole	No. of Poles	Hex Size	
		Primary	Secondary	Wire Range	Openings Per Pole	Wire Range	Openings Per Pole			Primary	Secondary
PDC-14-2/0-1	1			2/0-14	1	4-14	4	175	1	3/16	Slot
PDA-14-2/0-1	2			2/0-14	1	4-14	4	175	Adder	3/16	Slot
PDC-11-2/0-1	3			2/0-14	1	2/0-14	1	175	1	3/16	3/16
PDA-11-2/0-1	4			2/0-14	1	2/0-14	1	175	Adder	3/16	3/16

All wire sizes, unless noted otherwise, are American Wire Gauge (AWG)

Covers available 1-10 Poles. Specify length.

*Lexan is a registered trademark of SABIC INNOVATIVE PLASTICS HOLDINGS BV.

Tested to UL 1059, UL File E84782



Block Size	No. of Poles	Dimensions						
		A	B	C	D	E	F	G
S	1	1.05	1.94	2.88	2.25	.31	.53	.80
S	2	1.85	1.94	2.88	2.25	.31	.53	.80

"A" Dimension increases by .80 per additional pole.

TYPE PDA PDC

Features

- Modular design
- Easy to assemble
- UL Recognized 90° C 600 Volts and is CSA Certified
- Electro-tin plated
- Lexan® insulating base
- Manufactured from high strength 6061-T6 aluminum alloy

Benefits

- Simplifies stocking. Combines any number of blocks with multiple conductor ranges into the specific configuration required for the job.
- Unique locking feature allows individual blocks to be combined quickly without special tools
- Ensures reliability
- Provides low contact resistance
- Provides a high degree of impact resistance with superior insulating qualities
- Suitable for use with either copper or aluminum conductors



Fig. 1



Fig. 2



Fig. 3



Fig. 4

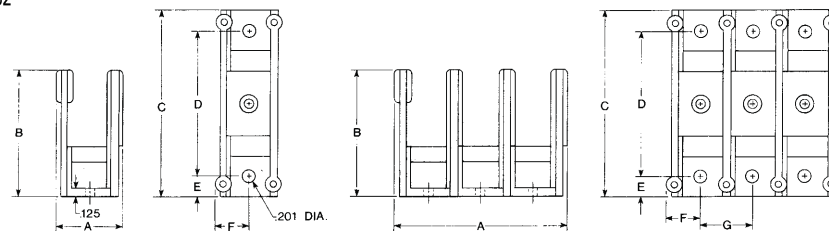
Catalog Number	Figure Number	Connector		Primary		Secondary		Ampere Rating Per Pole	No. of Poles	Hex Size	
		Primary	Secondary	Wire Range	Openings Per Pole	Wire Range	Openings Per Pole			Primary	Secondary
PDC-14-2/0-1	1			2/0-14	1	4-14	4	175	1	3/16	Slot
PDA-14-2/0-1	2			2/0-14	1	4-14	4	175	Adder	3/16	Slot
PDC-11-2/0-1	3			2/0-14	1	2/0-14	1	175	1	3/16	3/16
PDA-11-2/0-1	4			2/0-14	1	2/0-14	1	175	Adder	3/16	3/16

All wire sizes, unless noted otherwise, are American Wire Gauge (AWG)

Covers available 1-10 Poles. Specify length.

*Lexan is a registered trademark of SABIC INNOVATIVE PLASTICS HOLDINGS BV.

Tested to UL 1059, UL File E84782



Block Size	No. of Poles	Dimensions						
		A	B	C	D	E	F	G
S	1	1.05	1.94	2.88	2.25	.31	.53	.80
S	2	1.85	1.94	2.88	2.25	.31	.53	.80

"A" Dimension increases by .80 per additional pole.