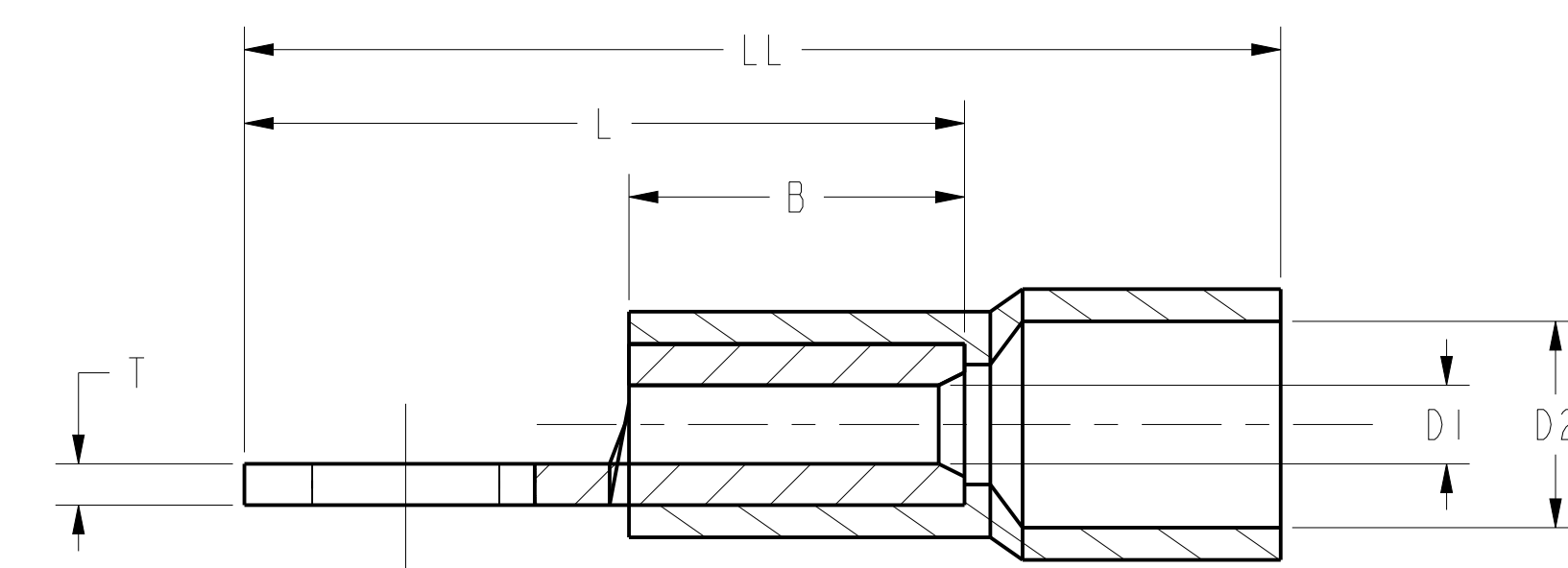
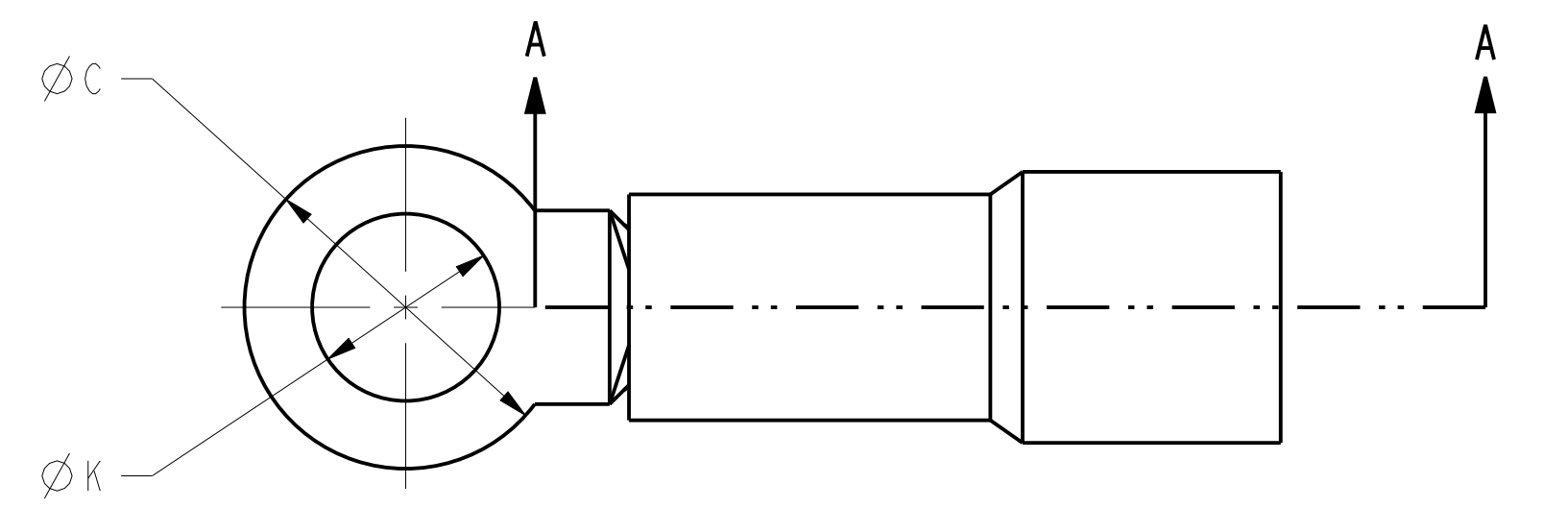


COLOUR CODE	CONDUCTOR SIZE (AWG)	D1 MAXIMUM WIRE DIAMETER	MAXIMUM STUD SIZE		CATALOG NUMBER			C (NOMINAL)	K (NOMINAL)	L +.000 -.030 [+0,00 -0,76]	LL +.000 -.050 [+0,00 -1,27]	T ±.005 [±0,30]	B +.000 -.030 [+0,00 -0,76]	D2 MAXIMUM INSULATION DIAMETER	INSTALLATION TOOL
			IMPERIAL	METRIC (mm)	BAG PACK	BOX PACK	BULK PACK								
RED	22-16	.061 [1,55]	#2	2	-----	TPI82	BBA182	.218 [5,54]	.093 [2,36] .119 [3,02]	.528 [13,41]	.773 [19,63]	.032 [0,81]	.260 [6,60]	.160 [4,06]	
			#4	2,5	-----	TPI84	BBA184	.250 [6,35]	.145 [3,68]	.558 [14,17]	.803 [20,40]				
			#6	3,5	CR100	TPI86	BBA186	.312 [7,92]	.171 [4,34] .204 [5,18]	.669 [16,99]	.914 [23,22]				
			#8	4	CR101	TPI88	BBA188	.400 [10,16]	.271 [6,88]	.808 [20,52]	1.053 [26,75]				
			#10	5	CR102	TPI810	BBA1810	.531 [13,49]	.330 [8,38] .409 [10,39]	.966 [24,54]	1.211 [30,76]				
			1/4"	6,5	-----	TPI814	BBA1814								
			5/16"	8	-----	TPI8516	BBA18516								
BLUE	16-14	.077 [1,96]	#2	2	-----	TPI42	BBA142	.218 [5,54]	.093 [2,36] .119 [3,02]	.528 [13,41]	.773 [19,63]	.032 [0,81]	.260 [6,60]	.190 [4,83]	MR8891C MR8891I Y1022
			#4	2,5	-----	TPI44	BBA144	.250 [6,35]	.145 [3,68]	.558 [14,17]	.803 [20,40]				
			#6	3,5	CR103	TPI46	BBA146	.312 [7,92]	.171 [4,34] .204 [5,18]	.669 [16,99]	.914 [23,22]				
			#8	4	CR104	TPI48	BBA148	.400 [10,16]	.271 [6,88]	.808 [20,52]	1.053 [26,75]				
			#10	5	CR105	TPI410	BBA1410	.531 [13,49]	.330 [8,38] .409 [10,39]	.966 [24,54]	1.211 [30,76]				
			1/4"	6,5	CR106	TPI414	BBA1414								
			5/16"	8	-----	TPI4516	BBA14516								
YELLOW	12-10	.124 [3,15]	#4	2,5	-----	TPI04	BBA104	.312 [7,92]	.119 [3,02] .145 [3,68]	.676 [17,17]	.951 [24,16]	.040 [1,02]	.340 [8,64]	.280 [7,11]	
			#6	3,5	-----	TPI06	BBA106	.358 [9,09]	.171 [4,34] .204 [5,18]	.772 [19,61]	1.038 [26,37]				
			#8	4	CR107	TPI08	BBA108	.531 [13,49]	.271 [6,88] .330 [8,38] .409 [10,39]	.988 [25,10]	1.263 [32,00]				
			#10	5	CR108	TPI010	BBA1010								
			1/4"	6,5	CR109	TPI014	BBA1014								
			5/16"	8	-----	TPI0516	BBA10516								
			3/8"	10	-----	TPI038	BBA1038								

REV	DATE	DESCRIPTION	ECO	BY	C'H'K.
A	09/07/2011 00:00:00 AM	REDRAW IN PROE	25029	DD	MB

NO. OF DECIMAL PLACES		TOLERANCES UNLESS OTHERWISE SPECIFIED	
METRIC	INCH	METRIC	INCH
1	2	±.8	±.03
2	3	±.38	±.015
ANGLES		±.0° - 30°	



SECTION A-A

- NOTES:
- DIMENSIONS IN BRACKETS [] ARE IN MILLIMETERS ROUNDED OFF TO THE NEAREST MILLIMETER, UNLESS OTHERWISE NOTED AND ARE FOR REFERENCE ONLY.
 - PURE ELECTROLYTIC COPPER, TIN PLATED.
 - BRAZED SEAM, COMPLETE CIRCULAR BARREL.
 - ZONE ANNEALING OFFERS SOFT BARREL FOR EASY CRIMPING WITHOUT LOOSING TEMPER OF PAD.
 - LISTED, FILE No. LR 38612.
 - LISTED, FILE No. E 68345

TO ORDER BURNDY® PRODUCTS CALL
 UNITED STATES
 1-800-346-4175 (LONDONDERRY, NH)
 CANADA:
 1-800-361-6975 (QUEBEC)
 1-800-387-6487 (ALL OTHER PROVINCES)
 FOR PRODUCT INFO: <http://www.burndy.com>

INSULATED BRAZED TERMINAL			
ITEM NO:	---		
CAT. NO:	CR, TP, BBA		
DRAWN BY:	H. GILL	5/13/94	
CHECKER:	V. TORRES	5/14/94	
DSN APPVL:	---	---	
MFG APPVL:	---	---	
QA APPVL:	---	---	
MKT APPVL:	---	---	
PROD FAM:	---	DRAWING NO	REV
PROJECT #:	---	SIZE	CSD032954-01
DOCUMENT TYPE:	Sales	D	A
REL LEVEL:	Released		SHEET 1 OF 1



REV: PFC200