
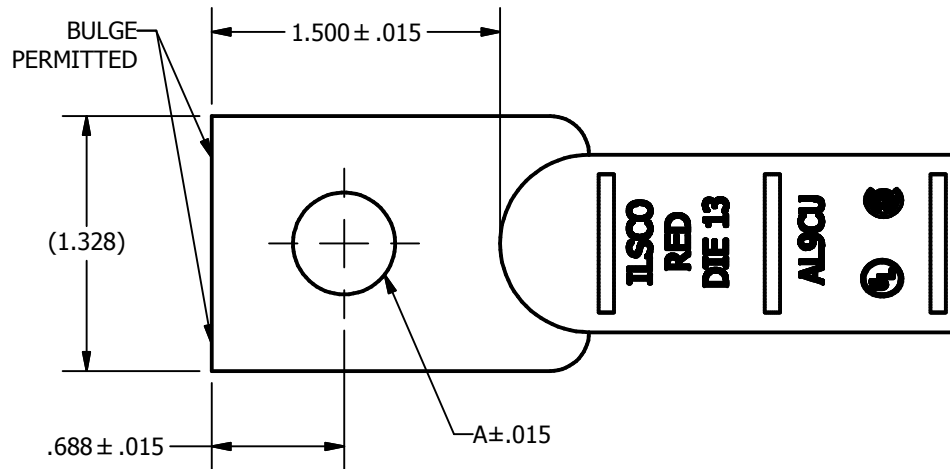
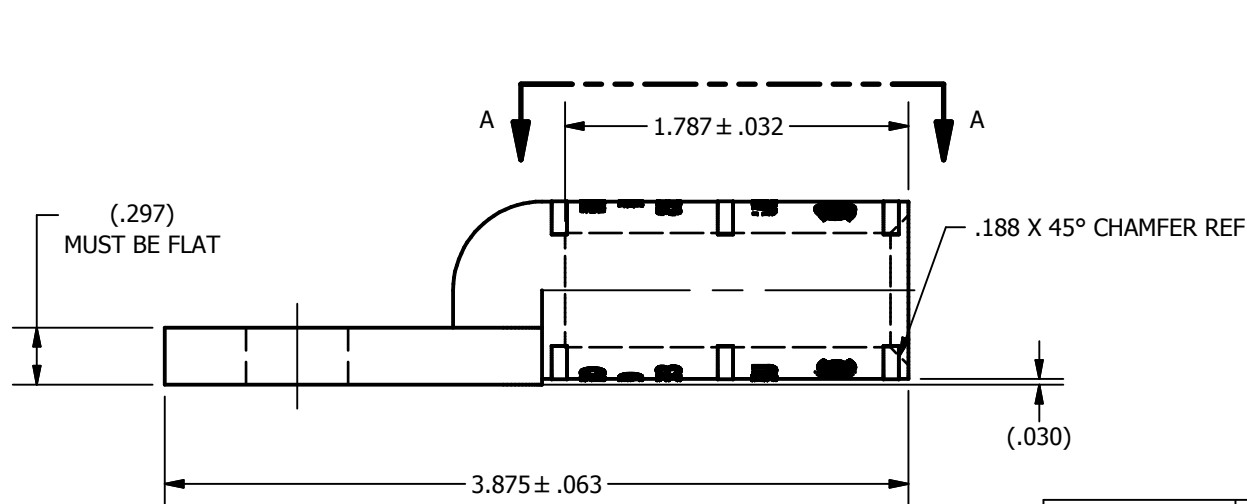


SCREW: NONE	MATERIAL:ALUMINUM, L022827	TOLERANCES-UNLESS OTHERWISE SPECIFIED 2 PL. DEC. ±.010 TRUE C.L. ±.015 3 PL. DEC. ±.005 ANGLES ±1		DWG. NO. J0131		
CAT. NO.:ACL-250, ACL-250-B	PLATING: EL-TIN	DRAWN BY:CLH	SCALE: 1:1	SHEET 1 OF 1		
MASS:.1517 LBS.	MARKING: ON TANG: ILSCO, ACL-250, 250MCM INK MARK PER F921 COLOR: RED	DATE:7/25/2008	SIZE: A			
SURFACE AREA: 19.1165 IN ²		CELL:CSP				
STUFFER SHT: FORM 11					REV.	DESCRIPTION
					U	

Cat #: ACL-250
ACL-250-B



VIEW A-A
SCALE 1.5 : 1



DEV	A	MASS LBS.	SURFACE AREA IN ²
00	.531	.151	17.738
46	.406	.154	17.806