

Gold Seal Strain Relief Connectors

Features

- Tapered threaded male hub NPT.
- Watertight/Oiltight.
- UL Listed NEMA 4 and 6 when installed into a NPT threaded entry or UL Listed conduit hub (sizes 1 1/4" and larger require thread sealant).
- Rated at 90°C.

Standard Materials

- Malleable iron
- Grommets — PVC

Standard Finishes

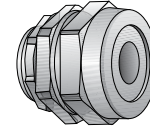
- Zinc plated

Options

- Mechanical Galvanized. Contact your local representative.

NEC/CEC Certifications and Compliances

- UL Listed: E-11857
- CSA Certified: 009795



Straight Connector
Type SR-502

Hub Size (Inches)	Cable Range Millimeters (Inches)		Dimensions in Millimeters (Inches)				Catalog Number
	Dia. Over Jacket		Throat I.D.	Body Length	Thread. Length	Max. Dia.	
	Min.	Max.					
1/2	2.54 (0.1) - 5.08 (0.2)		13.21 (0.52)	28.7 (1.13)	14.22 (0.56)	26.92 (1.06)	SR-502 ②
1/2	5.08 (0.2) - 7.62 (0.3)		13.21 (0.52)	28.7 (1.13)	14.22 (0.56)	26.92 (1.06)	SR-503 ②
1/2	7.62 (0.3) - 10.16 (0.4)		13.21 (0.52)	28.7 (1.13)	14.22 (0.56)	26.92 (1.06)	SR-504 ②
1/2	10.16 (0.4) - 12.7 (0.5)		15.49 (0.61)	30.23 (1.19)	14.22 (0.56)	26.92 (1.06)	SR-505 ②
1/2	12.7 (0.5) - 15.24 (0.6)		15.49 (0.61)	30.23 (1.19)	11.18 (0.44)	26.92 (1.06)	SR-506 ②
1/2	15.24 (0.6) - 17.78 (0.7)		15.49 (0.61)	30.23 (1.19)	11.18 (0.44)	35.05 (1.38)	SR-507 ①②
3/4	2.54 (0.1) - 5.08 (0.2)		19.3 (0.76)	30.23 (1.19)	11.18 (0.44)	35.05 (1.38)	SR-752
3/4	5.08 (0.2) - 7.62 (0.3)		19.3 (0.76)	30.23 (1.19)	11.18 (0.44)	35.05 (1.38)	SR-753
3/4	7.62 (0.3) - 10.16 (0.4)		19.3 (0.76)	30.23 (1.19)	11.18 (0.44)	35.05 (1.38)	SR-754 ②
3/4	10.16 (0.4) - 12.7 (0.5)		19.3 (0.76)	30.23 (1.19)	11.18 (0.44)	35.05 (1.38)	SR-755 ②
3/4	12.7 (0.5) - 15.24 (0.6)		19.3 (0.76)	30.23 (1.19)	11.18 (0.44)	35.05 (1.38)	SR-756 ②
3/4	15.24 (0.6) - 17.78 (0.7)		19.3 (0.76)	30.23 (1.19)	11.18 (0.44)	35.05 (1.38)	SR-757 ②
3/4	17.78 (0.7) - 20.32 (0.8)		20.32 (0.8)	31.75 (1.25)	11.18 (0.44)	41.4 (1.63)	SR-758 ②
3/4	20.32 (0.8) - 22.86 (0.9)		20.32 (0.8)	31.75 (1.25)	11.18 (0.44)	16 (0.63)	SR-759 ①②
3/4	22.86 (0.9) - 25.4 (1)		20.32 (0.8)	31.75 (1.25)	11.18 (0.44)	41.4 (1.63)	SR-7510 ①②
1	2.54 (0.1) - 5.08 (0.2)		24.38 (0.96)	31.75 (1.25)	16 (0.63)	41.4 (1.63)	SR-1002
1	5.08 (0.2) - 7.62 (0.3)		24.38 (0.96)	31.75 (1.25)	16 (0.63)	41.4 (1.63)	SR-1003
1	7.62 (0.3) - 10.16 (0.4)		24.38 (0.96)	31.75 (1.25)	16 (0.63)	41.4 (1.63)	SR-1004
1	10.16 (0.4) - 12.7 (0.5)		24.38 (0.96)	31.75 (1.25)	16 (0.63)	41.4 (1.63)	SR-1005
1	12.7 (0.5) - 15.24 (0.6)		24.38 (0.96)	31.75 (1.25)	16 (0.63)	41.4 (1.63)	SR-1006 ②
1	15.24 (0.6) - 17.78 (0.7)		24.38 (0.96)	31.75 (1.25)	16 (0.63)	41.4 (1.63)	SR-1007 ②
1	17.78 (0.7) - 20.32 (0.8)		24.38 (0.96)	31.75 (1.25)	16 (0.63)	41.4 (1.63)	SR-1008 ②
1	20.32 (0.8) - 22.86 (0.9)		24.38 (0.96)	31.75 (1.25)	16 (0.63)	41.4 (1.63)	SR-1009 ②
1.00	22.86 (0.9) - 25.4 (1)		24.38 (0.96)	31.75 (1.25)	16 (0.63)	41.4 (1.63)	SR-10010 ①②
1.00	25.4 (1) - 30.48 (1.2)		24.38 (0.96)	35.05 (1.38)	16 (0.63)	49.28 (1.94)	SR-10012 ①②
1-1/4	22.86 (0.9) - 25.4 (1)		30.48 (1.2)	35.05 (1.38)	16 (0.63)	52.32 (2.06)	SR-12510 ②
1-1/4	25.4 (1) - 30.48 (1.2)		30.48 (1.2)	35.05 (1.38)	16 (0.63)	52.32 (2.06)	SR-12512 ②
1.25	30.48 (1.2) - 35.56 (1.4)		30.99 (1.22)	39.62 (1.56)	16 (0.63)	60.45 (2.38)	SR-12514 ①②
1 1/2	25.4 (1) - 30.48 (1.2)		38.1 (1.5)	39.62 (1.56)	16 (0.63)	60.45 (2.38)	SR-15012 ②
1 1/2	30.48 (1.2) - 35.56 (1.4)		38.1 (1.5)	39.62 (1.56)	16 (0.63)	60.45 (2.38)	SR-15014 ②
1.50	35.56 (1.4) - 40.64 (1.6)		39.62 (1.56)	45.97 (1.81)	16 (0.63)	76.2 (3)	SR-15016 ①②
1.50	40.64 (1.6) - 45.72 (1.8)		39.62 (1.56)	45.97 (1.81)	16 (0.63)	76.2 (3)	SR-15018 ①②
2	30.48 (1.2) - 35.56 (1.4)		49.02 (1.93)	52.32 (2.06)	16 (0.63)	76.2 (3)	SR-20014 ②
2	35.56 (1.4) - 40.64 (1.6)		49.02 (1.93)	52.32 (2.06)	16 (0.63)	76.2 (3)	SR-20016 ②
2	40.64 (1.6) - 45.72 (1.8)		49.02 (1.93)	52.32 (2.06)	16 (0.63)	76.2 (3)	SR-20018 ②
2-1/2	38.1 (1.5) - 45.72 (1.8)		61.98 (2.44)	63.5 (2.5)	28.7 (1.13)	103.12 (4.06)	SR-25018 ②
2-1/2	45.72 (1.8) - 53.34 (2.1)		61.98 (2.44)	63.5 (2.5)	28.7 (1.13)	103.12 (4.06)	SR-25021 ②
2-1/2	53.34 (2.1) - 60.96 (2.4)		61.98 (2.44)	63.5 (2.5)	28.7 (1.13)	103.12 (4.06)	SR-25024 ②
3	38.1 (1.5) - 45.72 (1.8)		61.98 (2.44)	63.5 (2.5)	28.7 (1.13)	103.12 (4.06)	SR-30018 ②
3	45.72 (1.8) - 53.34 (2.1)		61.98 (2.44)	63.5 (2.5)	28.7 (1.13)	103.12 (4.06)	SR-30021 ②
3	53.34 (2.1) - 60.96 (2.4)		61.98 (2.44)	63.5 (2.5)	28.7 (1.13)	103.12 (4.06)	SR-30024 ②

① Remove enough jacket to get conductors through Throat I.D.

② UL Listed NEMA 4, 6 and 12 when installed into a NPT threaded entry or UL Listed conduit hub.

Gold Seal Strain Relief Connectors

Features

- Tapered threaded male hub NPT.
- Watertight/Oiltight.
- UL Listed NEMA 4 and 6 when installed into a NPT threaded entry or UL Listed conduit hub (sizes 1 1/4" and larger require thread sealant).
- Rated at 90°C.

Standard Materials

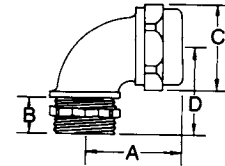
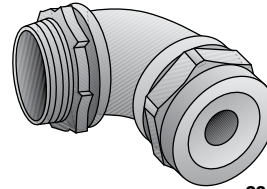
- Malleable iron
- Grommets — PVC

Standard Finishes

- Zinc plated

NEC/CEC Certifications and Compliances

- UL Standard: ANSI/UL 514B
- UL Listed: E-11857
- CSA Standard: C22.2 No. 18
- CSA Certified: 009795
- Fed. Spec: Commercial Item Description A-505-52



90° Connector
Type SR9-502

Hub Size (Inches)	Cable Range Millimeters (Inches)		Dimensions in Millimeters (Inches)				Catalog Number	
	Dia. Over Jacket		Throat I.D.	A	B	C		D
	Min.	Max.						
1/2	2.54 (0.1) - 5.08 (0.2)		12.7 (0.5)	35.05 (1.38)	11.18 (0.44)	26.92 (1.06)	26.92 (1.06)	SR9-502 ②
1/2	5.08 (0.2) - 7.62 (0.3)		12.7 (0.5)	35.05 (1.38)	11.18 (0.44)	26.92 (1.06)	26.92 (1.06)	SR9-503 ②
1/2	7.62 (0.3) - 10.16 (0.4)		12.7 (0.5)	35.05 (1.38)	11.18 (0.44)	26.92 (1.06)	26.92 (1.06)	SR9-504 ②
1/2	11.68 (0.46) - 14.22 (0.56)		12.7 (0.5)	35.05 (1.38)	11.18 (0.44)	26.92 (1.06)	26.92 (1.06)	SR9-505 ②
1/2	12.7 (0.5) - 15.24 (0.6)		15.49 (0.61)	38.1 (1.5)	12.7 (0.5)	35.05 (1.38)	30.23 (1.19)	SR9-506 ②
1/2	15.24 (0.6) - 17.78 (0.7)		15.49 (0.61)	38.1 (1.5)	12.7 (0.5)	35.05 (1.38)	30.23 (1.19)	SR9-507 ①②
3/4	2.54 (0.1) - 5.08 (0.2)		20.32 (0.8)	45.97 (1.81)	11.18 (0.44)	35.05 (1.38)	36.58 (1.44)	SR9-752
3/4	5.08 (0.2) - 7.62 (0.3)		20.32 (0.8)	45.97 (1.81)	11.18 (0.44)	35.05 (1.38)	36.58 (1.44)	SR9-753
3/4	7.62 (0.3) - 10.16 (0.4)		20.32 (0.8)	45.97 (1.81)	11.18 (0.44)	35.05 (1.38)	36.58 (1.44)	SR9-754 ②
3/4	10.16 (0.4) - 12.7 (0.5)		20.32 (0.8)	45.97 (1.81)	11.18 (0.44)	35.05 (1.38)	36.58 (1.44)	SR9-755 ②
3/4	12.7 (0.5) - 15.24 (0.6)		20.32 (0.8)	45.97 (1.81)	11.18 (0.44)	35.05 (1.38)	36.58 (1.44)	SR9-756 ②
3/4	15.24 (0.6) - 17.78 (0.7)		20.32 (0.8)	45.97 (1.81)	11.18 (0.44)	35.05 (1.38)	36.58 (1.44)	SR9-757 ②
3/4	17.78 (0.7) - 20.32 (0.8)		20.83 (0.82)	47.75 (1.88)	14.22 (0.56)	41.4 (1.63)	38.1 (1.5)	SR9-758 ②
1	2.54 (0.1) - 5.08 (0.2)		24.13 (0.95)	50.8 (2)	12.7 (0.5)	41.4 (1.63)	39.62 (1.56)	SR9-1002
1	5.08 (0.2) - 7.62 (0.3)		24.13 (0.95)	50.8 (2)	12.7 (0.5)	41.4 (1.63)	39.62 (1.56)	SR9-1003
1	7.62 (0.3) - 10.16 (0.4)		24.13 (0.95)	50.8 (2)	12.7 (0.5)	41.4 (1.63)	39.62 (1.56)	SR9-1004
1	10.16 (0.4) - 12.7 (0.5)		24.13 (0.95)	50.8 (2)	12.7 (0.5)	41.4 (1.63)	39.62 (1.56)	SR9-1005
1	12.7 (0.5) - 15.24 (0.6)		24.13 (0.95)	50.8 (2)	12.7 (0.5)	41.4 (1.63)	39.62 (1.56)	SR9-1006 ②
1	15.24 (0.6) - 17.78 (0.7)		24.13 (0.95)	50.8 (2)	12.7 (0.5)	41.4 (1.63)	39.62 (1.56)	SR9-1007 ②
1	17.78 (0.7) - 20.32 (0.8)		24.13 (0.95)	50.8 (2)	12.7 (0.5)	41.4 (1.63)	39.62 (1.56)	SR9-1008 ②
1	20.32 (0.8) - 22.86 (0.9)		24.13 (0.95)	50.8 (2)	12.7 (0.5)	41.4 (1.63)	39.62 (1.56)	SR9-1009 ②
1	22.86 (0.9) - 25.4 (1)		24.13 (0.95)	50.8 (2)	12.7 (0.5)	41.4 (1.63)	39.62 (1.56)	SR9-10010 ①②
1-1/4	22.86 (0.9) - 25.4 (1)		27.94 (1.1)	68.33 (2.69)	16 (0.63)	49.28 (1.94)	54.1 (2.13)	SR9-12510 ②
1-1/4	25.4 (1) - 30.48 (1.2)		27.94 (1.1)	68.33 (2.69)	16 (0.63)	49.28 (1.94)	54.1 (2.13)	SR9-12512 ①②
1-1/2	25.4 (1) - 30.48 (1.2)		35.31 (1.39)	74.68 (2.94)	16 (0.63)	60.45 (2.38)	57.15 (2.25)	SR9-15012 ②
1-1/2	30.48 (1.2) - 35.56 (1.4)		35.31 (1.39)	74.68 (2.94)	16 (0.63)	60.45 (2.38)	57.15 (2.25)	SR9-15014 ①②
2	30.48 (1.2) - 35.56 (1.4)		44.96 (1.77)	92.2 (3.63)	17.53 (0.69)	76.2 (3)	77.72 (3.06)	SR9-20014 ②
2	35.56 (1.4) - 40.64 (1.6)		44.96 (1.77)	92.2 (3.63)	17.53 (0.69)	76.2 (3)	77.72 (3.06)	SR9-20016 ②
2	40.64 (1.6) - 45.72 (1.8)		44.96 (1.77)	92.2 (3.63)	17.53 (0.69)	76.2 (3)	77.72 (3.06)	SR9-20018 ①②

① Remove enough jacket to get conductors through Throat I.D.

② UL Listed NEMA 4, 6 and 12 when installed into a NPT threaded entry or UL Listed conduit hub.