

Metal Detectable Cable Ties and Mounts

Pan-Ty® Metal Detectable Cable Ties and Mounts are designed to help the food, beverage, and pharmaceutical industries meet product manufacturing safety standards. Featuring metal impregnated material, these metal detectable products are identifiable by metal detectors and x-ray inspection equipment. Panduit metal detectable products help companies comply with the U.S. Food and Drug Administration HACCP* standards and the European Union (EU) hygiene monitoring regulations. Additionally, the distinct blue color facilitates quick visual detection. Metal detectable cable ties and mounts are available in either nylon material for general purpose applications or polypropylene material which provides superior resistance to harsh cleaning chemicals. The GT series of tools captures the cut-off tips of ties to help further prevent process stream contamination. The Pan-Ty® Metal Detectable Cable Ties, Cable Tie Mounts, and Installation Tools deliver a complete bundling solution to help reduce product contamination and loss.



*HACCP = Hazard Analysis and Critical Control Points – a systematic preventive approach to food and pharmaceutical safety that addresses hazards as a means of prevention rather than finished product inspection.

Key Features

Benefits

Cable Ties and Mounts

Metal impregnated material	Allows a cable tie or cable tie mount to be identified by metal detectors or x-ray inspection equipment helping to reduce contamination in finished products Contributes to compliance of manufacturing standards and HACCP regulations to demonstrate due diligence for consumer safety and quality inspections
Choice of polypropylene or nylon material	Suitable for use in a variety of environments, including areas subjected to harsh cleaning solvents providing long term durability (see material properties chart on page 2)
Blue color	Distinct color per common industry practices provides easy identification on conveyor belts and in finished products, reducing waste due to product contamination

Cable Ties

One-piece cable tie design with locking wedge	Provides low thread force for easy and reliable installation which improves productivity and reduces the potential for operator fatigue
Curved tip	Easy to pick up tie from flat surfaces; allows faster initial threading
Smooth, round edges	Safe and easy for installers to use, won't damage cable

Mounts

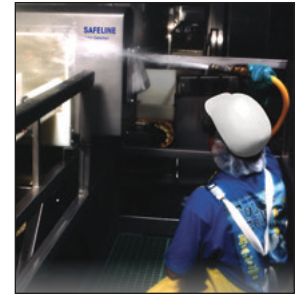
Cradle design mount	Holds cables securely in place; provides maximum stability for cable bundle
Low profile design mount	Keeps bundle close to mounting surface and conserves space

Metal Detectable Cable Ties and Mounts

Ordering Information

Polypropylene Metal Detectable Products

- For use in processing and packaging areas where aggressive acid and alkaline chemicals are used to clean the equipment
- Excellent chemical resistant cable tie and mount solution for food and pharmaceutical processing equipment manufacturing applications

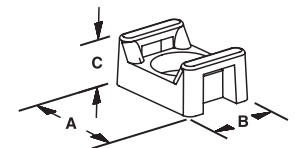


Cable Ties

Part Number	Length In. (mm)	Width In. (mm)	Thickness In. (mm)	Head Height In. (mm)	Head Width In. (mm)	Max. Bundle Diameter In. (mm)	Min. Loop Tensile Strength Lbs. (N)	Recommended Tools	Std. Pkg. Qty.*
Miniature Cross Section									
PLT1M-C186	3.9 (100)	0.098 (2.5)	0.044 (1.1)	0.186 (4.8)	0.188 (4.8)	0.87 (22)	15 (67)	GTS-E	100
Intermediate Cross Section									
PLT2I-C186	8.0 (203)	0.135 (3.4)	0.047 (1.2)	0.180 (4.6)	0.240 (6.1)	2.00 (51)	24 (107)	GTS-E	100
Standard Cross Section									
PLT2S-C186	7.3 (186)	0.190 (4.8)	0.057 (1.4)	0.240 (6.1)	0.320 (8.1)	1.85 (47)	30 (133)	GTS-E, GTH-E	100
PLT3S-C186	11.5 (291)					3.00 (76)			100
PLT4S-C186	14.4 (366)					4.00 (102)			100
Light-Heavy Cross Section (Straight Tip)									
PLT3H-L186	11.1 (282)	0.300 (7.6)	0.075 (1.9)	0.360 (9.1)	0.480 (12.2)	3.00 (76)	60 (267)	GTH-E	50
PLT4H-L186	14.4 (366)					4.00 (102)			50

Cable Tie Mounts

Part Number	Used With Cable Ties	A Width In. (mm)	B Length In. (mm)	C Height In. (mm)	Counterbore Diameter In. (mm)	Mounting Method	Std. Pkg. Qty.*
TM2S8-C186	Min., Int., Std.	0.630 (16.0)	0.422 (10.7)	0.275 (7.0)	0.325 (8.3)	#8 (M4) screw	100
TM3S8-C186	Std.,	0.867(22.0)	0.614 (15.6)	0.373 (9.5)	0.325 (8.3)	#8 (M4) screw	100
TM3S10-C186	Lt. Hvy.				0.385 (9.8)	#10 (M5) screw	100



*Order number of pieces required in multiples of standard package quantity.

Technical Information Chart

Material Properties	Nylon 6.6	Polypropylene
Max. Continuous Use Temperature per Test Method UL 746B	185°F (85°C)	239°F (115°C)
Tensile Strength	High**	Moderate**
Water Absorption (24 hours) per ASTM D570	1.2% (absorbs water)	0.1% (resists water absorption)
Chemical Resistance		
Inorganic and Organic Acids	Good	Excellent
Alkaline Cleaners	Good	Excellent
Disinfectants and Sanitizers	Good	Excellent
Color	Light Blue	Dark Blue

Note: Polypropylene material is recommended for use with strong alkaline and acid based cleaners that are used in high concentrations and where extended cleaning soak times are the norm. In applications where temperatures run over 239°F (115°C), stainless steel ties and mounts are recommended (see back page).

**For exact Minimum Loop Tensile Strength information for each part number, please refer to table (above and on next page).

Metal Detectable Cable Ties and Mounts

Ordering Information

Nylon Metal Detectable Products

- Excellent solution for general purpose maintenance and repair applications
- Ideal for use in control panels and overhead cable runs

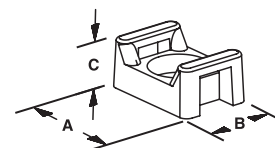


Cable Ties

Part Number	Length In. (mm)	Width In. (mm)	Thickness In. (mm)	Head Height In. (mm)	Head Width In. (mm)	Max. Bundle Diameter In. (mm)	Min. Loop Tensile Strength Lbs. (N)	Recommended Tools	Std. Pkg. Qty.*
Miniature Cross Section									
PLT1M-C86	3.9 (100)	0.098 (2.5)	0.044 (1.1)	0.186 (4.8)	0.188 (4.8)	0.87 (22)	18 (80)	GTS-E	100
Intermediate Cross Section									
PLT2I-C86	8.0 (203)	0.135 (3.4)	0.047 (1.2)	0.180 (4.6)	0.240 (6.1)	2.00 (51)	30 (133)	GTS-E	100
Standard Cross Section									
PLT2S-C86	7.3 (186)	0.190 (4.8)	0.057 (1.4)	0.240 (6.1)	0.320 (8.1)	1.85 (47)	50 (222)	GTS-E, GTH-E	100
PLT3S-C86	11.5 (291)					3.00 (76)			100
PLT4S-C86	14.4 (366)					4.00 (102)			100
Light-Heavy Cross Section (Straight Tip)									
PLT3H-L86	11.1 (282)	0.300 (7.6)	0.075 (1.9)	0.360 (9.1)	0.480 (12.2)	3.00 (76)	120 (534)	GTH-E	50
PLT4H-L86	14.4 (366)					4.00 (102)			50

Cable Tie Mounts

Part Number	Used With Cable Ties	A Width In. (mm)	B Length In. (mm)	C Height In. (mm)	Counterbore Diameter In. (mm)	Mounting Method	Std. Pkg. Qty.*
TM2S8-C86	Min., Int., Std.	0.630 (16.0)	0.422 (10.7)	0.275 (7.0)	0.325 (8.3)	#8 (M4) screw	100
TM3S8-C86	Std.,	0.867	0.614	0.373	0.325 (8.3)	#8 (M4) screw	100
TM3S10-C86	Lt. Hvy.	(22.0)	(15.6)	(9.5)	0.385 (9.8)	#10 (M5) screw	100



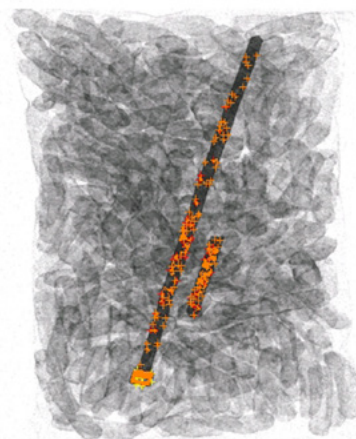
*Order number of pieces required in multiples of standard package quantity.

Panduit cable ties and mounts are detectable by a variety of methods to help reduce product contamination and associated recall risks:

- Metal detectors
- X-ray inspection equipment
- Visual detection

Quality Assurance

All cable tie and mount packages contain a quality control number for complete product traceability; each lot passes metal detection as part of final product verification.



Example x-ray image of metal detectable cable tie in finished product

Metal Detectable Cable Ties and Mounts

Cable Tie Installation Tools

Pan-Ty® Metal Detectable Cable Ties can be installed using Panduit GT series of ergonomic hand tools that capture cut-off tips of the ties during installation to help prevent product contamination. Panduit cable tie installation tools provide consistent results and speed installation to reduce installed cost.



Additional Benefits:

- Flush tie cut-off eliminates sharp edges and improves worker safety
- Lightweight, ergonomic, comfortable and easy to use



GTS-E

Installs PLT1M, PLT2I, PLT2S, PLT3S, PLT4S cable ties.



GTH-E

Installs PLT2S, PLT3S, PLT4S, PLT3H, PLT4H cable ties.

Related Products

Stainless Steel Cable Ties and Mounts

When strength, vibration, corrosion and temperature extremes are a factor, Pan-Steel® Stainless Steel Cable Ties and Mounts provide a strong, reliable system for cable bundling and mechanical fastening applications in harsh environments.

- Available in 304 and 316 grade stainless steel
- Cable tie loop tensile strength up to 1,200 Lbs.
- Continuous working temperatures up to 1000°F (538°C)



WORLDWIDE SUBSIDIARIES AND SALES OFFICES

PANDUIT CANADA
Markham, Ontario
cs-cdn@panduit.com
Phone: 800.777.3300

PANDUIT EUROPE LTD.
London, UK
cs-emea@panduit.com
Phone: 44.20.8601.7200

PANDUIT SINGAPORE PTE. LTD.
Republic of Singapore
cs-ap@panduit.com
Phone: 65.6305.7575

PANDUIT JAPAN
Tokyo, Japan
cs-japan@panduit.com
Phone: 81.3.6863.6000

PANDUIT LATIN AMERICA
Guadalajara, Mexico
cs-la@panduit.com
Phone: 52.33.3777.6000

PANDUIT AUSTRALIA PTY. LTD.
Victoria, Australia
cs-aus@panduit.com
Phone: 61.3.9794.9020

For a copy of Panduit product warranties, log on to www.panduit.com/warranty

PANDUIT®

For more information
Visit us at www.panduit.com
Contact Customer Service by email: cs@panduit.com
or by phone: 800-777-3300

©2015 Panduit Corp.
ALL RIGHTS RESERVED.
Printed in the U.S.A.
Product Bulletin Number **CTCB51--SA-ENG**
Replaces SA-CTCB37
10/2016