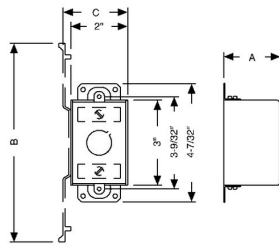




3 IN. X 2 IN. SWITCH BOXES - 1-1/2 TO 2-1/2 IN. DEEP WITH CONDUIT KO'S

2-1/2 in. Deep Switch Boxes - Gangable with Conduit KO's
Plaster Ears

A47



Catalog #: 500

APPLICATIONS

RACO® Switch boxes are used to house wiring devices such as switches and outlets

PRODUCT FEATURES

Gangable switch boxes offer the option of constructing a box to hold two or more devices
Plaster ears allow a box to be used in "old work" applications
N/A

UL LISTED

File E195978

COMPLIANCES

All RACO® single gang, two gang, 4 in. square, and single gang gangable UL listed steel boxes are acceptable for use in 2-hour fire rated walls. For additional information, consult UL "Fire Resistance Directory" or the UL website at www.ul.com

MSDS

www.hubbell-rtb.com/certifications/Hubbell-RACO_MSDS_for_Steel_Boxes_and_Covers.pdf

FIRE RESISTANCE

Acceptable for use in 2-hour rated walls

GENERAL PRODUCT INFORMATION

Wiring System: Conduit

CONFIGURATION

End Knockouts: (2) 1/2 in.
Ends Cable: ---
Bracket Type: No Bracket
Side Knockout(s): (4) 1/2 in.
Bottom Knockouts(s): (2) 1/2 in.

DRAWING DIMENSIONS

Dimension A: 2-1/2 in.

PRODUCT MEASUREMENTS

Depth: 2-1/2 in.
Cubic Inches (cm3): 12.5 (204.8)
Wt. Ea. (Lbs.): 0.551
Product Length (in.): 2.50
Product Width (in.): 4.22
Product Height (in.): 2.00

PACKAGING

Minimum Pack Qty.: 50
Std. Pkg.: 50
Product UPC-A Labeled: No
Weight (Lbs. Per/C): 55.10
Ship Carton Length (in.): 13.75
Ship Carton Width (in.): 8.25
Ship Carton Height (in.): 10.88
Ctn Weight (Lbs.): 27.55
Pallet Qty: 3250
UPC Number: 050169905005
I2of5: 50050169905000